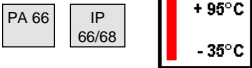


**ATEX Ex e**  
**SIB-TEC Kabelverschraubung**  
 Polyamid



- Material:**
- 1/3: Verschraubungskörper/Hutmutter: Polyamid
  - 2: Dichtung: Neopren
- Kennzeichen:**
- metrisches Gewinde
  - kurzes/langes Gewinde
  - mit Reduzierdichteinsatz
  - Achtung: in Zonen 21 & 22 muss die Gewindedichtung montiert sein.

- Anwendungsbereiche:**
- für explosionsgefährdete Bereiche
  - Maschinen und Apparatebau
  - Mess- und Regeltechnik
  - Anlagenbau

Zündschutzart : **Ex e**  
 Nach Normen : **EN 60079-0, EN 60079-7, EN 61241-0, EN 61241-1**

Gerätegruppe : **II**  
 Kategorie : **2 und 3**  
 Atmosphäre : **G / D**  
 Zone : **1, 2**  
 Zone : **21, 22 mit Flachdichtung**  
 Temperaturen **M12** : **-20°C / 80°C**  
 Temperaturen **M16 - M63** : **-35°C / 95°C**

IP Schutzart : **IP 66/68**

**ATEX Ex e**  
**SIB-TEC Cable gland**  
 Polyamide



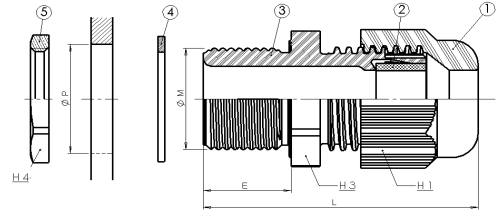
- Material:**
- 1/3: Gland element/Cap nut: Polyamide
  - 2: Seal: Neoprene
- Characteristics:**
- metric thread
  - short/long thread
  - with reducer-seal insert
  - Warning: assembling of the threadsealing is compulsory for zones 21 & 22

- Applications:**
- for hazardous locations
  - machine- and apparatus engineering
  - measuring and control engineering
  - plant installations

Type of protection : **Ex e**  
 Conformity with standards : **EN 60079-0, EN 60079-7, EN 61241-0, EN 61241-1**

Device group : **II**  
 Category : **2 und 3**  
 Atmosphäre : **G / D**  
 Zone : **1, 2**  
 Zone : **21, 22 with flatseal**  
 Temperature **M12** : **-20°C / 80°C**  
 Temperature **M16 - M63** : **-35°C / 95°C**

Protection degree : **IP 66/68 without thread sealing**



**KURZ / SHORT**

Aussen-Gewinde	Typ	Klemmbereich	E	SW H	L	Art.-Nr.	Art.-Nr.	VE
Thread	Type	clamping range	E	SW H	L	tiefschwarz RAL 9005 Art.-No.	blau RAL 5012 Art.-No.	Stack.
		mm	mm	mm	mm	jet black RAL 9005	blue RAL 5012	PU
								pcs.
M 12 x 1.5	kurz / short	4.5 - 6.5	8,0	15,0	32,0	F8021200E	F7421200E	50
M 16 x 1.5/9	kurz / short	5.0 - 8.0	10,0	19,0	37,0	F8021650E	F7421650E	50
M 16 x 1.5/11	kurz / short	5.0 - 10.0	10,0	22,0	39,0	F8021600E	F7421600E	50
M 20 x 1.5/13	kurz / short	7.0 - 12.0	10,0	24,0	40,0	F8022050E	F7422050E	50
M 20 x 1.5/16	kurz / short	10.0 - 14.0	10,0	27,0	43,0	F8022000E	F7422000E	50
M 25 x 1.5/16	kurz / short	10.0 - 14.0	10,0	27,0	45,0	F8022550E	F7422550E	20
M 25 x 1.5/21	kurz / short	12.0 - 18.0	10,0	33,0	49,0	F8022500E	F7422500E	20
M 32 x 1.5	kurz / short	16.0 - 25.0	10,0	42,0	52,0	F8023200E	F7423200E	20
M 40 x 1.5	kurz / short	22.0 - 32.0	10,0	53,0	62,0	F8024000E	F7424000E	20
M 50 x 1.5	kurz / short	28.0 - 38.5	12,0	60,0	67,0	F8025000E	F7425000E	10
M 63 x 1.5	kurz / short	40.0 - 48.0	12,0	70,0	68,0	F8026300E	F7426300E	5
M 12 x 1.5	mit Reduzierdichteinsatz / with reducer-seal insert	3.0 - 5.0	8,0	15,0	32,0	F8021240E	F7421240E	50
M 16 x 1.5/9	mit Reduzierdichteinsatz / with reducer-seal insert	4.0 - 6.0	10,0	19,0	37,0	F8021660E	F7421660E	50
M 16 x 1.5/11	mit Reduzierdichteinsatz / with reducer-seal insert	4.0 - 7.0	10,0	22,0	39,0	F8021640E	F7421640E	50
M 20 x 1.5/13	mit Reduzierdichteinsatz / with reducer-seal insert	5.0 - 9.0	10,0	24,0	40,0	F8022060E	F7422060E	50
M 20 x 1.5/16	mit Reduzierdichteinsatz / with reducer-seal insert	8.0 - 12.0	10,0	27,0	43,0	F8022040E	F7422040E	50
M 25 x 1.5/16	mit Reduzierdichteinsatz / with reducer-seal insert	8.0 - 12.0	10,0	27,0	45,0	F8022560E	F7422560E	20
M 25 x 1.5/21	mit Reduzierdichteinsatz / with reducer-seal insert	10.0 - 16.0	10,0	33,0	49,0	F8022540E	F7422540E	20
M 32 x 1.5	mit Reduzierdichteinsatz / with reducer-seal insert	14.0 - 21.0	10,0	42,0	52,0	F8023240E	F7423240E	20
M 40 x 1.5	mit Reduzierdichteinsatz / with reducer-seal insert	16.0 - 26.0	10,0	53,0	62,0	F8024040E	F7424040E	20
M 50 x 1.5	mit Reduzierdichteinsatz / with reducer-seal insert	20.0 - 31.0	12,0	60,0	67,0	F8025040E	F7425040E	10
M 63 x 1.5	mit Reduzierdichteinsatz / with reducer-seal insert	30.0 - 39.0	12,0	70,0	68,0	F8026340E	F7426340E	5

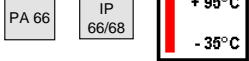
**LANG / LONG**

Aussen-Gewinde	Typ	Klemmbereich	E	SW H	L	Art.-Nr.	Art.-Nr.	VE
Thread	Type	clamping range	E	SW H	L	tiefschwarz RAL 9005 Art.-No.	blau RAL 5012 Art.-No.	Stack.
		mm	mm	mm	mm	jet black RAL 9005	blue RAL 5012	PU
								pcs.
M 12 x 1.5	lang / long	4.5 - 6.5	15,0	15,0	39,0	F8031200E	F7431200E	50
M 16 x 1.5/9	lang / long	5.0 - 8.0	15,0	19,0	42,0	F8031650E	F7431650E	50
M 16 x 1.5/11	lang / long	5.0 - 10.0	15,0	22,0	44,0	F8031600E	F7431600E	50
M 20 x 1.5/13	lang / long	7.0 - 12.0	15,0	24,0	45,0	F8032050E	F7432050E	50
M 20 x 1.5/16	lang / long	10.0 - 14.0	15,0	27,0	48,0	F8032000E	F7432000E	50
M 25 x 1.5/16	lang / long	10.0 - 14.0	15,0	27,0	50,0	F8032550E	F7432550E	20
M 25 x 1.5/21	lang / long	12.0 - 18.0	15,0	33,0	53,0	F8032500E	F7432500E	20
M 32 x 1.5	lang / long	16.0 - 25.0	15,0	42,0	57,0	F8033200E	F7433200E	20
M 40 x 1.5	lang / long	22.0 - 32.0	16,0	53,0	68,0	F8034000E	F7434000E	20
M 50 x 1.5	lang / long	28.0 - 38.5	16,0	60,0	71,0	F8035000E	F7435000E	10
M 63 x 1.5	lang / long	40.0 - 48.0	16,0	70,0	72,0	F8036300E	F7436300E	5
M 12 x 1.5	mit Reduzierdichteinsatz / with reducer-seal insert	3.0 - 5.0	15,0	15,0	39,0	F8031240E	F7431240E	50
M 16 x 1.5/9	mit Reduzierdichteinsatz / with reducer-seal insert	4.0 - 6.0	15,0	19,0	42,0	F8031660E	F7431660E	50
M 16 x 1.5/11	mit Reduzierdichteinsatz / with reducer-seal insert	4.0 - 7.0	15,0	22,0	44,0	F8031640E	F7431640E	50
M 20 x 1.5/13	mit Reduzierdichteinsatz / with reducer-seal insert	5.0 - 9.0	15,0	24,0	45,0	F8032060E	F7432060E	50
M 20 x 1.5/16	mit Reduzierdichteinsatz / with reducer-seal insert	8.0 - 12.0	15,0	27,0	48,0	F8032040E	F7432040E	50
M 25 x 1.5/16	mit Reduzierdichteinsatz / with reducer-seal insert	8.0 - 12.0	15,0	27,0	50,0	F8032560E	F7432560E	20
M 25 x 1.5/21	mit Reduzierdichteinsatz / with reducer-seal insert	10.0 - 16.0	15,0	33,0	53,0	F8032540E	F7432540E	20
M 32 x 1.5	mit Reduzierdichteinsatz / with reducer-seal insert	14.0 - 21.0	15,0	42,0	57,0	F8033240E	F7433240E	20
M 40 x 1.5	mit Reduzierdichteinsatz / with reducer-seal insert	16.0 - 26.0	16,0	53,0	68,0	F8034040E	F7434040E	20
M 50 x 1.5	mit Reduzierdichteinsatz / with reducer-seal insert	20.0 - 31.0	16,0	60,0	71,0	F8035040E	F7435040E	10
M 63 x 1.5	mit Reduzierdichteinsatz / with reducer-seal insert	30.0 - 39.0	16,0	70,0	72,0	F8036340E	F7436340E	5



**ATEX Ex e**

**SIB-TEC Kabelverschraubung**  
Polyamid



Kabelverschraubungen  
cable glands

- Material:**
- 1/3: Verschraubungskörper/Hutmutter: Polyamid
  - 2: Dichtung: Neopren
- Kennzeichen:**
- NPT-Gewinde
  - mit Reduzierdichteinsatz
  - Achtung: in Zonen 21 & 22 muss die Gewindedichtung montiert sein.

- Anwendungsbereiche:**
- für explosionsgefährdete Bereiche
  - Maschinen und Apparatebau
  - Mess- und Regeltechnik
  - Anlagenbau

Zündschutzart :  
Nach Normen :

Gerätegruppe :  
Kategorie :  
Atmosphäre :  
Zone :  
Zone :  
Temperaturen :  
IP Schutzart :

**Ex e**  
EN 60079-0, 60079-7,  
61241-0, 61241-1  
II  
2 und 3  
G / D  
1, 2  
21, 22 mit Flachdichtung  
-35°C / 95°C  
IP 66/68

**ATEX Ex e**  
**SIB-TEC Cable gland**  
Polyamide

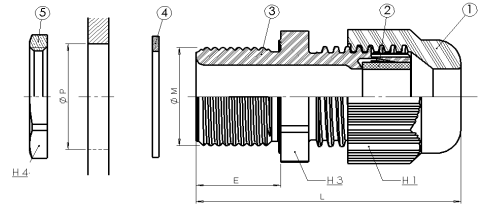
- Material:**
- 1/3: Gland element/Cap nut: Polyamide
  - 2: Seal: Neoprene

- Characteristics:**
- NPT-thread
  - with reducer-seal insert
  - Warning: assembling of the threadsealing is compulsory for zones 21 & 22

- Applications:**
- for hazardous locations
  - machine- and apparatus engineering
  - measuring and control engineering
  - plant installations

**Type of protection :**  
**Conformity with standards :**  
**Device group :**  
**Category :**  
**Atmosphäre :**  
**Zone :**  
**Temperature :**  
**Protection degree :**

**Ex e**  
EN 60079-0, 60079-7,  
61241-0, 61241-1  
II  
2 und 3  
G / D  
1, 2  
21, 22 with flatseal  
-35°C / 95°C  
IP 66/68 without thread sealing



Aussen-Gewinde Thread	Klemmbereich clamping range	E mm	SW H mm	L mm	Art.-Nr. tiefschwarz RAL 9005 Art.-No. jet black RAL 9005	Art.-Nr. blau RAL 5012 Art.-No. blue RAL 5012	VE Stck. PU pcs.
NPT 3/8"	5.0 - 8.0	11.0	19.0	38.0	F8040800E	F7440800E	50
NPT 1/2"	7.0 - 12.0	14.0	24.0	44.0	F8041200E	F7441200E	50
NPT 3/4"	12.0 - 18.0	15.0	33.0	54.0	F8042000E	F7442000E	20
NPT 1"	16.0 - 25.0	18.0	42.0	60.0	F8042800E	F7442800E	20
NPT 3/8" mit Reduzierdichteinsatz /with reducer-seal inser	4.0 - 8.0	11.0	19.0	38.0	F8040840E	F7440840E	50
NPT 1/2" mit Reduzierdichteinsatz /with reducer-seal inser	5.0 - 9.0	14.0	24.0	44.0	F8041200E	F7441240E	50
NPT 3/4" mit Reduzierdichteinsatz /with reducer-seal inser	10.0 - 16.0	15.0	33.0	54.0	F8042040E	F7442040E	20
NPT 1" mit Reduzierdichteinsatz /with reducer-seal inser	14.0 - 21.0	18.0	42.0	60.0	F8042840E	F7442840E	20



**ATEX Ex e**  
**WADI - TEC ECEA Kabelverschraubung**  
**Polyamid 25% GF**

PA 6  
Fv

IP  
66/68

+ 55°C  
- 20°C



**Material:**

- 1/4: Verschraubungskörper/Hutmutter  
Polyamid PA 6,  
25% glasfaserverstärkt
- 2: Dichtung: Neopren
- 3: Klemmringe: Polycarbonat

**Kennzeichen:**

- metrisches Gewinde
- kurzes Gewinde
- langes Gewinde
- Achtung: in Zonen 21 & 22 muss die Gewindedichtung montiert sein.

**Anwendungsbereiche:**

- für den explosionsgefährdeten Bereich
- Maschinen und Apparatebau
- Mess- und Regeltechnik
- Anlagenbau

Zündschutzart : **Ex e**  
Nach Normen : EN 60079-0, 60079-7,  
61241-0, 61241-1  
Gerätegruppe : II  
Kategorie : 2 und 3  
Atmosphäre : G / D  
Zone : 1, 2  
Zone : 21, 22 mit Flachdichtung  
Temperaturen 1 : -20°C / 55°C  
IP Schutzart : IP68/66

**ATEX Ex e**  
**WADI-TEC ECEA Cable gland**  
**Polyamide 25% GF**

**Material:**

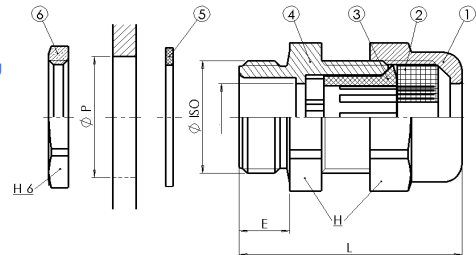
- 1/4: Gland element/Cap nut:  
Polyamide 6,  
25% glassfiber reinforced
- 2: Seal: Neoprene
- 3: Clamping-Ring: Polycarbonate

**Characteristics**

- metric thread
- short thread
- long thread
- Warning: assembling of the threadsealing is compulsory for zones 21 & 22

**Applications:**

- for hazardous locations
- Machine- and apparatus engineering
- measuring and control engineering
- plant installations



Type of protection : **Ex e**  
Conformity with standards : EN 60079-0, 60079-7,  
61241-0, 61241-1  
Device group : II  
Category : 2 and 3  
Atmosphäre : G / D  
Zone : 1, 2  
Zone : 21, 22 with flatseal  
Temperature 1 : -20°C / 55°C  
Protection degree : IP68/66

Aussen-Gewinde	Typ	Klemmbereich	Klemmbereich	E	SW	L	Art.-Nr.	VE
Thread	Type	mm	Zugentlastung	mm	H1	mm	schwarz	Stck.
		clamping range	mm	E	SW	L	Art.-No.	PU
		mm	strain relief external	mm	H1	mm	black	pcs.
		mm	mm		mm			
M 16 x 1,5	kurz / short	5,0 - 8,5	3,5 - 5,5	8,0	19,0	32,0	Z7821600E	50
M 20 x 1,5/13	kurz / short	8,0 - 12,5	5,0 - 8,0	9,0	24,0	36,0	Z7822000E	50
M 20 x 1,5/16	kurz / short	10,0 - 14,0	6,5 - 10,0	9,0	27,0	39,0	Z7822010E	50
M 25 x 1,5	kurz / short	12,5 - 18,5	8,0 - 12,5	11,0	33,0	44,0	Z7822500E	20
M 32 x 1,5	kurz / short	18,0 - 25,0	10,0 - 18,0	13,0	42,0	55,0	Z7823200E	20
M 16 x 1,5	lang / long	5,0 - 8,5	3,5 - 5,5	15,0	19,0	39,0	Z7831600E	50
M 20 x 1,5	lang / long	8,0 - 12,5	5,0 - 8,0	15,0	24,0	42,0	Z7832000E	50
M 20 x 1,5/13	lang / long	10,0 - 14,0	6,5 - 10,0	15,0	27,0	45,0	Z7832010E	50
M 25 x 1,5/16	lang / long	12,5 - 18,5	8,0 - 12,5	15,0	33,0	49,0	Z7832500E	20
M 32 x 1,5	lang / long	18,0 - 25,0	10,0 - 18,0	15,0	42,0	58,0	Z7833200E	20
M 40 x 1,5	lang / long	24,0 - 34,0	-	15,0	55,0	62,0	Z7834000E	20
M 50 x 1,5	lang / long	34,0 - 42,0	-	15,0	65,0	65,0	Z7835000E	10
M 63 X 1,5	lang / long	40,0 - 48,0	-	15,0	70,0	65,0	Z7836300E	5

RAL 7001 grau auf Anfr. / RAL 7001 grey is available on request



**ATEX Ex e**  
**WADI - TEC ECEA Kabelverschraubung**  
**Polyamid 25% GF**

PA 6  
Fv

IP  
66/68

+ 55°C  
- 20°C



**Material:**

- 1/4: Verschraubungskörper/Hutmutter  
Polyamid PA 6,  
25% glasfaserverstärkt
- 2: Dichtung: Neopren
- 3: Klemmringe: Polycarbonat

**Kennzeichen:**

- PG Gewinde
- kurzes Gewinde
- langes Gewinde
- Achtung: in Zonen 21 & 22 muss die Gewindedichtung montiert sein.

**Anwendungsbereiche:**

- für den explosionsgefährdeten Bereich
- Maschinen und Apparatebau
- Mess- und Regeltechnik
- Anlagenbau

**Zündschutzart :**

Nach Normen :

Gerätegruppe :

Kategorie :

Atmosphäre :

Zone :

Zone :

Temperaturen 1 :

IP Schutzart :

**Ex e**

EN 60079-0, 60079-7,  
61241-0, 61241-1

II

2 und 3

G / D

1, 2

21, 22 mit Flachdichtung

-20°C / 55°C

IP68/66

**ATEX Ex e**  
**WADI-TEC ECEA Cable gland**  
**Polyamide 25% GF**

**Material:**

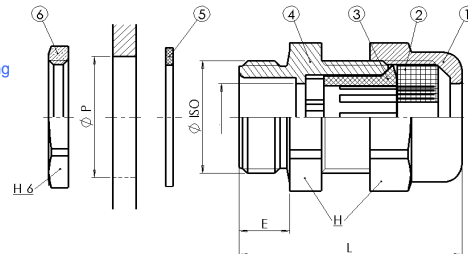
- 1/4: Gland element/Cap nut:  
Polyamide 6,  
25% glassfiber reinforced
- 2: Seal: Neoprene
- 3: Clamping-Ring: Polycarbonate

**Characteristics**

- PG thread
- short thread
- long thread
- Warning: assembling of the threadsealing is compulsory for zones 21 & 22

**Applications:**

- for hazardous locations
- Machine- and apparatus engineering
- measuring and control engineering
- plant installations



**Type of protection :**

Conformity with standards :

Device group :

Category :

Atmosphäre :

Zone :

Zone :

Temperature 1 :

Protection degree :

**Ex e**

EN 60079-0, 60079-7,  
61241-0, 61241-1

II

2 and 3

G / D

1, 2

21, 22 with flatseal

-20°C / 55°C

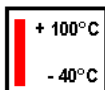
IP68/66

Aussen-Gewinde Thread	Typ Type	Klemmbereich mm clamping range	Klemmbereich Zugentlastung mm clamping range strain relief external mm	E mm E mm	SW H1 mm SW H1 mm	L mm L mm	Art.-Nr. schwarz Art.-No. black	VE Stck. PU pcs.
PG 9	kurz / short	5,0 - 8,0	3,5 - 5,0	8,0	19,0	32,0	Z7800900E	50
PG 11	kurz / short	6,5 - 10,5	4,0 - 6,5	8,0	22,0	35,0	Z7801100E	50
PG 13,5	kurz / short	8,0 - 12,5	5,0 - 8,0	9,0	24,0	36,0	Z7801300E	50
PG 16	kurz / short	10,0 - 14,0	6,5 - 10,0	10,0	27,0	40,0	Z7801600E	50
PG 21	kurz / short	12,5 - 18,5	8,0 - 12,5	11,0	33,0	44,0	Z7802100E	20
PG 29	kurz / short	18,0 - 25,0	10,0 - 18,0	12,0	42,0	55,0	Z7802900E	20
PG 9	lang / long	5,0 - 8,0	3,5 - 5,5	15,0	19,0	39,0	Z7810900E	50
PG11	lang / long	6,5 - 10,5	4,0 - 6,5	15,0	22,0	42,0	Z7811100E	50
PG 13,5	lang / long	8,0 - 12,5	5,0 - 8,0	15,0	24,0	42,0	Z7811300E	50
PG 16	lang / long	10,0 - 14,0	6,5 - 10,0	15,0	27,0	45,0	Z7811600E	50
PG 21	lang / long	12,5 - 18,5	8,0 - 12,5	15,0	33,0	49,0	Z7812100E	20
PG 29	lang / long	18,0 - 25,0	10,0 - 18,0	15,0	42,0	58,0	Z7812900E	20
PG 36	lang / long	24,0 - 34,0	-	18,0	55,0	65,0	Z7813600E	10
PG 42	lang / long	34,0 - 42,0	-	18,0	65,0	68,0	Z7814200E	5
PG 48	lang / long	40,0 - 48,0	-	18,0	70,0	68,0	Z7814900E	5

RAL 7001 grau auf Anfr. / RAL 7001 grey is available on request



**ATEX Ex e**  
**SIB-TEC Kabelverschraubung**  
Messing vernickelt



**Material:**

- 1/4: Verschraubungskörper/Hutmutter  
Messing vernickelt.
- 2: Dichtung: Neopren
- 3: Einsatz: Polyamid 6
- 5: Dichtung für Außengewinde  
Nitril

**Kennzeichen:**

- metrisches Gewinde
- kurzes Gewinde / langes Gewinde
- mit Reduzierdichteinsatz

**Anwendungsbereiche:**

- für explosionsgefährdete Bereiche
- Maschinen und Apparatebau
- Mess- und Regeltechnik
- Anlagenbau

Zündschutzart :  
Nach Normen :

**Ex e**  
**EN 60079-0, 60079-7,**  
**61241-0, 61241-1**

Gerätegruppe :  
Kategorie :

II  
2 und 3

Atmosphäre :

G / D

Zone :

1, 2, 21, 22

Temperatur Bereich :

-40°C / 100°C

IP Schutzart :

IP68/66

**ATEX Ex e**  
**SIB-TEC Cable gland**  
nickel-plated brass



**Material:**

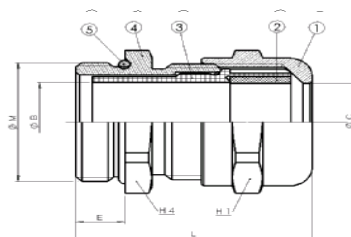
- 1/4: Gland element/Cap nut:  
nickel-plated brass
- 2: Seal: Neoprene
- 3: Insert: Polyamide 6
- 5: O-ring:  
Nitril

**Characteristics:**

- metric thread
- short thread / long thread
- with reducer-seal insert

**Applications:**

- for hazardous locations



- machine- and apparatus engineering
- measuring and control engineering
- plant installations

Type of protection :

**Ex e**

Conformity with standards :

**EN 60079-0, 60079-7,**  
**61241-0, 61241-1**

Device group :

II

Category :

2 and 3

Atmosphäre :

G / D

Zone :

1, 2, 21, 22

Temperature :

-40°C / 100°C

Protection degree :

IP 68 / 66

**KURZ / SHORT**

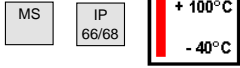
Aussen- Gewinde	Type	Klemmbereich mm	E mm	SW 1 H1 mm	SW 2 H4 mm	L mm	Art.-Nr.	VE Stck.
Thread	Type	Clamping range mm	E mm	SW 1 H1 mm	SW 2 H4 mm	L mm	Art.-No.	PU pcs.
M 12 x 1.5	kurz / short	4.5 - 6.5	5.0	14.0	14.0	25.0	C5212000E	1
M 16 x 1.5	kurz / short	5.0 - 9.5	5.0	17.0	17.0	28.0	C5216000E	1
M 20 x 1.5	kurz / short	8.0 - 13.0	6.0	22.0	22.0	32.0	C5222000E	1
M 25 x 1.5	kurz / short	9.0 - 16.0	7.0	27.0	27.0	35.0	C5225000E	1
M 32 x 1.5	kurz / short	12.0 - 21.0	8.0	34.0	34.0	38.0	C5232000E	1
M 40 x 1.5	kurz / short	16.0 - 27.0	8.0	42.0	42.0	41.0	C5240000E	1
M 50 x 1.5	kurz / short	23.0 - 35.0	9.0	55.0	55.0	46.0	C5250000E	1
M 63 x 1.5	kurz / short	36.0 - 48.0	10.0	65.0	65.0	54.0	C5263000E	1
M 12 x 1.5	mit Reduzierdichteinsatz / with reducer-seal insert	3.5 - 5	5.0	14.0	14.0	25.0	C5212040E	1
M 16 x 1.5	mit Reduzierdichteinsatz / with reducer-seal insert	4 - 7	5.0	17.0	17.0	28.0	C5216040E	1
M 20 x 1.5	mit Reduzierdichteinsatz / with reducer-seal insert	5 - 10	6.0	22.0	22.0	32.0	C5220040E	1
M 25 x 1.5	mit Reduzierdichteinsatz / with reducer-seal insert	6 - 13	7.0	27.0	27.0	35.0	C5225040E	1
M 32 x 1.5	mit Reduzierdichteinsatz / with reducer-seal insert	8 - 17	8.0	34.0	34.0	38.0	C5232040E	1
M 40 x 1.5	mit Reduzierdichteinsatz / with reducer-seal insert	11 - 22	8.0	42.0	42.0	41.0	C5240040E	1
M 50 x 1.5	mit Reduzierdichteinsatz / with reducer-seal insert	18 - 29	9.0	55.0	55.0	46.0	C5250040E	1
M 63 x 1.5	mit Reduzierdichteinsatz / with reducer-seal insert	29 - 40	10.0	65.0	65.0	54.0	C5263040E	1

**LANG / LONG**

Aussen- Gewinde	Type	Klemmbereich mm	E mm	SW 1 H1 mm	SW 2 H4 mm	L mm	Art.-Nr.	VE Stck.
Thread	Type	Clamping range mm	E mm	SW 1 H1 mm	SW 2 H4 mm	L mm	Art.-No.	PU pcs.
M 12 x 1.5	lang / long	4.5 - 6.5	15.0	14.0	14.0	35.0	C5312000E	1
M 16 x 1.5	lang / long	5.0 - 9.5	15.0	17.0	17.0	38.0	C5316000E	1
M 20 x 1.5	lang / long	8.0 - 13.0	15.0	22.0	22.0	41.0	C5322000E	1
M 25 x 1.5	lang / long	9.0 - 16.0	15.0	27.0	27.0	43.0	C5325000E	1
M 32 x 1.5	lang / long	12.0 - 21.0	15.0	34.0	34.0	45.0	C5332000E	1
M 40 x 1.5	lang / long	16.0 - 27.0	15.0	42.0	42.0	48.0	C5340000E	1
M 50 x 1.5	lang / long	23.0 - 35.0	15.0	55.0	55.0	52.0	C5350000E	1
M 63 x 1.5	lang / long	36.0 - 48.0	15.0	65.0	65.0	59.0	C5363000E	1
M 12 x 1.5	mit Reduzierdichteinsatz / with reducer-seal insert	3.5 - 5	15.0	14.0	14.0	25.0	C5312040E	1
M 16 x 1.5	mit Reduzierdichteinsatz / with reducer-seal insert	4 - 7	15.0	17.0	17.0	28.0	C5316040E	1
M 20 x 1.5	mit Reduzierdichteinsatz / with reducer-seal insert	5 - 10	15.0	22.0	22.0	32.0	C5320040E	1
M 25 x 1.5	mit Reduzierdichteinsatz / with reducer-seal insert	6 - 13	15.0	27.0	27.0	35.0	C5325040E	1
M 32 x 1.5	mit Reduzierdichteinsatz / with reducer-seal insert	8 - 17	15.0	34.0	34.0	38.0	C5332040E	1
M 40 x 1.5	mit Reduzierdichteinsatz / with reducer-seal insert	11 - 22	15.0	42.0	42.0	41.0	C5340040E	1
M 50 x 1.5	mit Reduzierdichteinsatz / with reducer-seal insert	18 - 29	15.0	55.0	55.0	46.0	C5350040E	1
M 63 x 1.5	mit Reduzierdichteinsatz / with reducer-seal insert	29 - 40	15.0	65.0	65.0	54.0	C5363040E	1



**ATEX Ex e**  
**SIB-TEC Kabelverschraubung**  
Messing vernickelt



- Material:**
- 1/4: Verschraubungskörper/Hutmutter  
Messing vernickelt.
  - 2: Dichtung: Neopren
  - 3: Einsatz: Polyamid 6
  - 5: Dichtung für Außengewinde  
Nitril
- Kennzeichen:**
- PG Gewinde
  - kurzes / langes Gewinde
  - mit Reduzerdichteinsatz

- Anwendungsbereiche:**
- für explosionsgefährdete Bereiche
  - Maschinen und Apparatebau
  - Mess- und Regeltechnik
  - Anlagenbau

Zündschutzart :  
Nach Normen :

Gerätegruppe :  
Kategorie :  
Atmosphäre :  
Zone :  
Temperatur Bereich :  
IP Schutzart :

**Ex e**  
EN 60079-0, 60079-7, 61241-0, 61241-1

II  
2 und 3  
G / D  
1, 2, 21, 22  
-40°C / 100°C  
IP68/66

**ATEX Ex e**  
**SIB-TEC Cable gland**  
nickel-plated brass



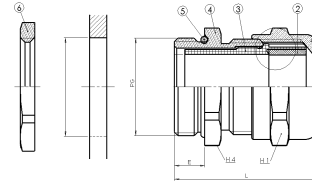
- Material:**
- 1/4: Gland element/Cap nut:  
nickel-plated brass
  - 2: Seal: Neoprene
  - 3: Insert: Polyamide 6
  - 5: O-ring:  
Nitril

- Characteristics:**
- PG thread
  - short / long thread
  - with reducer-seal insert

- Applications:**
- for hazardous locations
  - machine- and apparatus engineering
  - measuring and control engineering
  - plant installations

Type of protection :  
Conformity with standards :  
**Ex e**  
EN 60079-0, 60079-7, 61241-0, 61241-1

Device group :  
Category :  
Atmosphäre :  
Zone :  
Temperature :  
Protection degree :



**KURZ / SHORT**

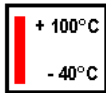
Aussen-Gewinde	Typ	Klemmbereich	E	SW 1 H1	SW 2 H4	L	Art.-Nr.	VE
Thread	Type	Clamping range	E	SW 1 H1	SW 2 H4	L	Art.-No.	PU
		mm	mm	mm	mm	mm		Stck.
		mm	mm	mm	mm	mm		pcs.
PG 07 x 1.5	kurz / short	4,5 - 6,5	5,0	14,0	14,0	25,0	C5007000E	50
PG 09 x 1.5	kurz / short	05 - 9,5	6,0	17,0	17,0	29,0	C5009000E	50
PG 11 x 1.5	kurz / short	07 - 11,5	6,0	20,0	20,0	30,0	C5011000E	50
PG 13 x 1.5	kurz / short	08 - 13	6,5	22,0	22,0	32,5	C5013000E	50
PG 16 x 1.5	kurz / short	09 - 15	6,5	24,0	24,0	34,0	C5016000E	50
PG 21 x 1.5	kurz / short	12 - 19	7,0	30,0	30,0	35,0	C5021000E	20
PG 29 x 1.5	kurz / short	17 - 26	8,0	40,0	40,0	38,0	C5029000E	20
PG 36 x 1.5	kurz / short	23 - 34,5	9,0	50,0	50,0	42,0	C5036000E	10
PG 42 x 1.5	kurz / short	28 - 40	10,0	58,0	58,0	47,0	C5042000E	5
PG 48 x 1.5	kurz / short	36 - 48	10,0	65,0	65,0	54,0	C5048000E	5
PG 48 x 1.5 DIN	kurz / short	36 - 48	10,0	65,0	65,0	54,0	C5049000E	5
PG 07 x 1.5	mit Reduzerdichteinsatz /with reducer-seal insert	3,5 - 05	5,0	14,0	14,0	25,0	C5007400E	50
PG 09 x 1.5	mit Reduzerdichteinsatz /with reducer-seal insert	04 - 07	6,0	17,0	17,0	29,0	C5009400E	50
PG 11 x 1.5	mit Reduzerdichteinsatz /with reducer-seal insert	04 - 8,5	6,0	20,0	20,0	30,0	C5011400E	50
PG 13 x 1.5	mit Reduzerdichteinsatz /with reducer-seal insert	05 - 10	6,5	22,0	22,0	32,5	C5013400E	50
PG 16 x 1.5	mit Reduzerdichteinsatz /with reducer-seal insert	06 - 12	6,5	24,0	24,0	34,0	C5016400E	50
PG 21 x 1.5	mit Reduzerdichteinsatz /with reducer-seal insert	09 - 16	7,0	30,0	30,0	35,0	C5021400E	20
PG 29 x 1.5	mit Reduzerdichteinsatz /with reducer-seal insert	12 - 21	8,0	40,0	40,0	38,0	C5029400E	20
PG 36 x 1.5	mit Reduzerdichteinsatz /with reducer-seal insert	17 - 28	9,0	50,0	50,0	42,0	C5036400E	10
PG 42 x 1.5	mit Reduzerdichteinsatz /with reducer-seal insert	23 - 34	10,0	58,0	58,0	47,0	C5042400E	5
PG 48 x 1.5	mit Reduzerdichteinsatz /with reducer-seal insert	29 - 40	10,0	65,0	65,0	54,0	C5048400E	5
PG 48 x 1.5 DIN	mit Reduzerdichteinsatz /with reducer-seal insert	29 - 40	10,0	65,0	65,0	54,0	C5049400E	5

**LANG / LONG**

Aussen-Gewinde	Typ	Klemmbereich	E	SW 1 H1	SW 2 H4	L	Art.-Nr.	VE
Thread	Type	Clamping range	E	SW 1 H1	SW 2 H4	L	Art.-No.	PU
		mm	mm	mm	mm	mm		Stck.
		mm	mm	mm	mm	mm		pcs.
PG 07 x 1.5	lang / long	4,5 - 6,5	15,0	14,0	14,0	25,0	C5107000E	50
PG 09 x 1.5	lang / long	05 - 9,5	15,0	17,0	17,0	29,0	C5109000E	50
PG 11 x 1.5	lang / long	07 - 11,5	15,0	20,0	20,0	30,0	C5111000E	50
PG 13 x 1.5	lang / long	08 - 13	15,0	22,0	22,0	32,5	C5113000E	50
PG 16 x 1.5	lang / long	09 - 15	15,0	24,0	24,0	34,0	C5116000E	50
PG 21 x 1.5	lang / long	12 - 19	15,0	30,0	30,0	35,0	C5121000E	20
PG 29 x 1.5	lang / long	17 - 26	15,0	40,0	40,0	38,0	C5129000E	20
PG 36 x 1.5	lang / long	23 - 34,5	15,0	50,0	50,0	42,0	C5136000E	10
PG 42 x 1.5	lang / long	28 - 40	15,0	58,0	58,0	47,0	C5142000E	5
PG 48 x 1.5	lang / long	36 - 48	15,0	65,0	65,0	54,0	C5148000E	5
PG 48 x 1.5 DIN	lang / long	36 - 48	15,0	65,0	65,0	54,0	C5149000E	5
PG 07 x 1.5	mit Reduzerdichteinsatz /with reducer-seal insert	3,5 - 05	15,0	14,0	14,0	25,0	C5107400E	50
PG 09 x 1.5	mit Reduzerdichteinsatz /with reducer-seal insert	04 - 07	15,0	17,0	17,0	29,0	C5109400E	50
PG 11 x 1.5	mit Reduzerdichteinsatz /with reducer-seal insert	04 - 8,5	15,0	20,0	20,0	30,0	C5111400E	50
PG 13 x 1.5	mit Reduzerdichteinsatz /with reducer-seal insert	05 - 10	15,0	22,0	22,0	32,5	C5113400E	50
PG 16 x 1.5	mit Reduzerdichteinsatz /with reducer-seal insert	06 - 12	15,0	24,0	24,0	34,0	C5116400E	50
PG 21 x 1.5	mit Reduzerdichteinsatz /with reducer-seal insert	09 - 16	15,0	30,0	30,0	35,0	C5121400E	20
PG 29 x 1.5	mit Reduzerdichteinsatz /with reducer-seal insert	12 - 21	15,0	40,0	40,0	38,0	C5129400E	20
PG 36 x 1.5	mit Reduzerdichteinsatz /with reducer-seal insert	17 - 28	15,0	50,0	50,0	42,0	C5136400E	10
PG 42 x 1.5	mit Reduzerdichteinsatz /with reducer-seal insert	23 - 34	15,0	58,0	58,0	47,0	C5142400E	5
PG 48 x 1.5	mit Reduzerdichteinsatz /with reducer-seal insert	29 - 40	15,0	65,0	65,0	54,0	C5148400E	5
PG 48 x 1.5 DIN	mit Reduzerdichteinsatz /with reducer-seal insert	29 - 40	15,0	65,0	65,0	54,0	C5149400E	5



**ATEX Ex e**  
**SIB-TEC Kabelverschraubung**  
Messing vernickelt



- Material:**
- 1/4: Verschraubungskörper/Hutmutter Messing vernickelt.
  - 2: Dichtung: Neopren
  - 3: Einsatz: Polyamid 6
  - 5: Dichtung für Außengewinde Nitril
- Kennzeichen:**
- NPT Gewinde
  - mit Reduzierdichteinsatz

Zündschutzart :  
Nach Normen :

Gerätegruppe :  
Kategorie :  
Atmosphäre :  
Zone :  
Temperatur Bereich :  
IP Schutzart :

- Anwendungsbereiche:**
- für explosionsgefährdete Bereiche
  - Maschinen und Apparatebau
  - Mess- und Regeltechnik
  - Anlagenbau

**Ex e**  
EN 60079-0, 60079-7,  
61241-0, 61241-1

II  
2 und 3  
G / D  
1, 2 , 21, 22  
-40°C / 100°C  
IP68/66

**ATEX Ex e**  
**SIB-TEC Cable gland**  
nickel-plated brass

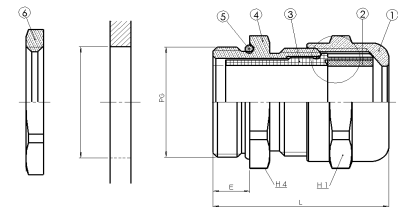


- Material:**
- 1/4: Gland element/Cap nut: nickel-plated brass
  - 2: Seal: Neoprene
  - 3: Insert: Polyamide 6
  - 5: O-ring: Nitril
- Characteristics:**
- NPT thread
  - with reducer-seal insert

Type of protection :  
Conformity with standards :  
Device group :  
Category :  
Atmosphäre :  
Zone :  
Temperature :  
Protection degree :

**Ex e**  
EN 60079-0, 60079-7,  
61241-0, 61241-1

II  
2 and 3  
G / D  
1, 2, 21, 22  
-40°C / 100°C  
IP 68 / 66



Aussen- Gewinde Thread	Typ Type	Klemmbereich mm Clamping range mm	E mm E mm	SW 1 H1 mm SW 1 H1 mm	SW 2 H4 mm SW 2 H4 mm	L mm L mm	Art.-Nr. Art.-No.	VE Stck. PU pcs.
3/8" NPT	kurz / short	5 - 9,5	15,0	17,0	18,0	38,0	C5408000E	1
1/2" NPT	kurz / short	8 - 13	20,0	22,0	23,0	46,0	C5412000E	1
3/4" NPT	kurz / short	9 - 16	20,0	27,0	28,0	48,0	C5420000E	1
1" NPT	kurz / short	12 - 21	25,0	34,0	36,0	55,0	C5428000E	1
3/8" NPT	mit Reduzierdichteinsatz / with reducer-seal insert	4 - 7	15,0	17,0	18,0	38,0	C5408400E	1
1/2" NPT	mit Reduzierdichteinsatz / with reducer-seal insert	5 - 10	20,0	22,0	23,0	46,0	C5412800E	1
3/4" NPT	mit Reduzierdichteinsatz / with reducer-seal insert	6 - 13	20,0	27,0	28,0	48,0	C5420400E	1
1" NPT	mit Reduzierdichteinsatz / with reducer-seal insert	8 - 17	25,0	34,0	36,0	55,0	C5428400E	1



**ATEX Ex e**  
**WADI - TEC ECEA GSE Kabelverschraubung**  
Messing vernickelt



**Material:**

- 1/4: Verschraubungskörper/Hutmutter  
Messing vernickelt.
- 2: Dichtung: Elastomer
- 3: Klemmringe: Polycarbonat
- 5: Dichtung für Außengewinde  
Nitril

**Kennzeichen:**

- metrisches Gewinde
- einfacher Dichtring

**Anwendungsbereiche:**

- für explosionsgefährdete Bereiche
- Mess- und Regeltechnik
- Anlagenbau

Zündschutzart :

**Ex e**

Nach Normen :

**EN 60079-0, 60079-7, 61241-0, 61241-1**

Gerätegruppe :

**II**

Kategorie :

**2 und 3**

Atmosphäre :

**G / D**

Zone :

**1, 2, 21, 22**

Temperature 1 :

**-20°C / 80°C**

IP Schutzart :

**IP68 / 66**

**ATEX Ex e**  
**WADI-TEC ECEA GSE Cable gland**  
nickel-plated brass

**Material:**

- 1/4: Gland element/Cap nut:  
nickel-plated brass
- 2: Seal: Elastomere
- 3: Clamping-Ring:  
Polycarbonate
- 5: O-ring:  
Nitril

**Characteristics:**

- metric thread
- one sealing ring

**Applications:**

- for hazardous locations

- machine- and apparatus engineering
- measuring and control engineering
- plant installations

Type of protection :

**Ex e**

Conformity with standards :

**EN 60079-0, 60079-7, 61241-0, 61241-1**

Device group :

**II**

Category :

**2 and 3**

Atmosphäre :

**G / D**

Zone :

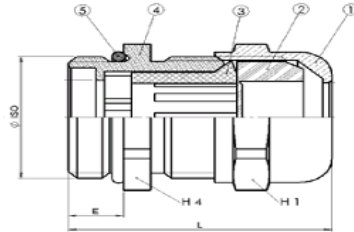
**1, 2, 21, 22**

Temperature :

**-20°C / 80°C**

Protection degree :

**IP 68 / 66**



Aussen- Gewinde	Klemmbereich	E	SW 1 H1	SW 2 H4	L	Art.-Nr.	VE
Thread	clamping range	mm	mm	mm	mm	Art.-No.	Stck.
	mm	mm	mm	mm	mm		PU
							pcs.
M 12 x 1.5	3.0 - 6.0	7,0	14,0	14,0	27,0	R0321200E	50
M 16 x 1.5/7	3.0 - 6.0	7,0	14,0	17,0	27,0	R0321640E	50
M 16 x 1.5/9	5.0 - 8.0	7,0	17,0	17,0	27,0	R0321600E	50
M 20 x 1.5/11	6.0 - 10.0	7,0	20,0	22,0	28,0	R0322040E	50
M 20 x 1.5/13	8.0 - 12.0	7,0	22,0	22,0	29,0	R0322000E	50
M 25 x 1.5/16	9.5 - 14.0	8,0	24,0	26,0	31,0	R0322540E	20
M 25 x 1.5/21	11.5 - 18.0	8,0	30,0	30,0	37,0	R0322500E	20
M 32 x 1.5/21	11.5 - 18.0	8,5	30,0	33,0	38,0	R0323240E	20
M 32 x 1.5/29	15.0 - 24.0	8,5	40,0	40,0	45,0	R0323200E	20
M 40 x 1.5	15.0 - 24.0	8,5	40,0	42,0	45,0	R0324040E	20
M 50 x 1.5	23.0 - 30.0	9,5	50,0	55,0	51,0	R0325040E	10
M 63 x 1.5	26.0 - 35.0	10,5	58,0	70,0	58,0	R0326340E	5

auch mit langem Gewinde lieferbar / also available with long thread





**ATEX Ex e**  
**WADI - TEC ECEA GSE Kabelverschraubung**  
Messing vernickelt

MS

IP  
66/68

+ 80°C  
- 20°C



**Material:**

- 1/4: Verschraubungskörper/Hutmutter  
Messing vernickelt.
- 2: Dichtung: Elastomer
- 3: Klemmringe: Polycarbonat
- 5: Dichtung für Außengewinde  
Nitril

**Kennzeichen:**

- PG Gewinde
- einfacher Dichtring

**Anwendungsbereiche:**

- für explosionsgefährdete Bereiche
- Mess- und Regeltechnik
- Anlagenbau

Zündschutzart :

**Ex e**

Nach Normen :

EN 60079-0, 60079-7, 61241-0,  
61241-1

Gerätegruppe :

II

Kategorie :

2 und 3

Atmosphäre :

G / D

Zone :

1, 2, 21, 22

Temperatur 1 :

-20°C / 80°C

IP Schutzart :

IP68 / 66

**ATEX Ex e**  
**WADI-TEC ECEA GSE Cable gland**  
nickel-plated brass

**Material:**

- 1/4: Gland element/Cap nut:  
nickel-plated brass
- 2: Seal: Elastomere
- 3: Clamping-Ring:  
Polycarbonate
- 5: O-ring:  
Nitril

**Characteristics:**

- PG thread
- one sealing ring

**Applications:**

- for hazardous locations

- machine- and apparatus engineering

- measuring and control engineering

- plant installations

Type of protection :

**Ex e**

Conformity with standards :

EN 60079-0, 60079-7, 61241-0,  
61241-1

Device group :

II

Category :

2 and 3

Atmosphäre :

G / D

Zone :

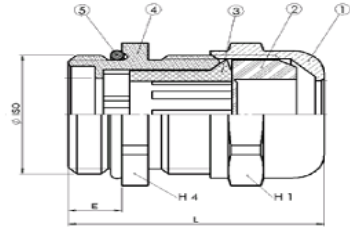
1, 2, 21, 22

Temperature :

-20°C / 80°C

IP protection :

IP 68 / 66



Aussen- Gewinde	Klemmbereich	E	SW 1 H1 mm	SW 2 H4 mm	L	Art.-Nr.	VE
Thread	Clamping range	E	SW 1 H1 mm	SW 2 H4 mm	L	Art.-No.	PU
	mm	mm			mm		pcs.
PG 7	3.0 - 6.0	5,0	14,0	14,0	24,0	R0300700E	50
PG 9	5.0 - 8.0	6,0	17,0	17,0	25,0	R0300900E	50
PG 11	6.0 - 10,0	6,0	20,0	20,0	26,0	R0301100E	50
PG 13	8.0 - 12,0	6,5	22,0	22,0	28,0	R0301300E	50
PG 16	9.5 - 14,0	6,5	24,0	24,0	30,0	R0301600E	50
PG 21	11.5 - 18,0	7,0	30,0	30,0	35,0	R0302100E	20
PG 29	15.0 - 24,0	8,0	40,0	40,0	43,0	R0302900E	20
PG 36	23.0 - 30,0	9,0	50,0	50,0	50,0	R0303600E	10
PG 42	26.0 - 35,0	10,0	58,0	58,0	57,0	R0304200E	5
PG 48 NFC	35.0 - 40,0	10,0	64,0	64,0	59,0	R0304800E	5
PG 48 DIN	35.0 - 40,0	10,0	64,0	64,0	59,0	R0304900E	5

auch mit langem Gewinde lieferbar / also available with long thread



**ATEX Ex e**  
**WADI - TEC ECEA GSE Kabelverschraubung**  
Messing vernickelt

MS

IP  
66/68

+ 80°C  
- 20°C



**Material:**

- 1/4: Verschraubungskörper/Hutmutter  
Messing vernickelt.
- 2: Dichtung: Elastomer
- 3: Klemmringe: Polycarbonat
- 5: Dichtung für Außengewinde  
Nitril

**Kennzeichen:**

- NPT Gewinde
- einfacher Dichtring

**Anwendungsbereiche:**

- für explosionsgefährdete Bereiche
- Mess- und Regeltechnik
- Anlagenbau

Zündschutzart :

**Ex e**

Nach Normen :

**EN 60079-0, 60079-7, 61241-0, 61241-1**

Gerätegruppe :

II

Kategorie :

2 und 3

Atmosphäre :

G / D

Zone :

1, 2, 21, 22

Temperatur 1 :

-20°C / 80°C

IP Schutzart :

IP68 / 66

**ATEX Ex e**  
**WADI-TEC ECEA GSE Cable gland**  
nickel-plated brass

**Material:**

- 1/4: Gland element/Cap nut:  
nickel-plated brass
- 2: Seal: Elastomere
- 3: Clamping-Ring:  
Polycarbonate
- 5: O-ring:  
Nitril

**Characteristics:**

- NPT thread
- one sealing ring

**Applications:**

- for hazardous locations
- machine- and apparatus engineering
- measuring and control engineering
- plant installations

Type of protection :

**Ex e**

Conformity with standards :

**EN 60079-0, 60079-7, 61241-0, 61241-1**

Device group :

II

Category :

2 and 3

Atmosphäre :

G / D

Zone :

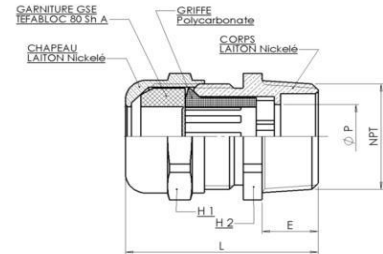
1, 2, 21, 22

Temperature :

-20°C / 80°C

Protection degree :

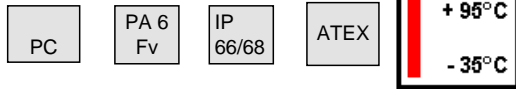
IP 68 / 66



Aussen- Gewinde	Klemmbereich	E	SW 1 H1	SW 2 H4	L	Art.-Nr.	VE
Thread	clamping range	mm	mm	mm	mm	Art.-No.	Stck.
	mm	mm	mm	mm	mm		PU pcs.
3/8"	3,0 - 6,0	14	19	15	35	R0340840 E	50
3/8"	5,0 - 8,0	17	19	15	35	R0340800 E	50
1/2"	5,0 - 8,0	17	22	20	40	R0341250 E	50
1/2"	6,0 - 10,0	20	22	20	42	R0341240 E	50
1/2"	8,0 - 12,0	22	22	20	42	R0341200 E	50
3/4"	9,5 - 14,0	24	30	20	45	R0342040 E	20
3/4"	11,5 - 18,0	30	30	20	49	R0342000 E	20
1"	15,0 - 24,0	40	40	25	60	R0342800 E	20
1" 1/4	15,0 - 24,0	40	46	26	61	R0343540 E	20
1" 1/2	23,0 - 30,0	50	50	26	67	R0344140 E	10
1" 1/2	26,0 - 35,0	58	58	26	73	R0344100 E	10
2"	35,0 - 40,0	64	64	27	76	R0344700 E	5



**ATEX Ex e -Blindstopfen**  
**6-kant**  
**Polyamid / Polycarbonat**



**Material:**  
metrisch: Polyamid 6 glassfaserverstärkt  
PG: Polycarbonat

- Kennzeichen:**
- 6-kant
  - Achtung: in Zonen 21 & 22 muss die Gewindedichtung montiert sein.

Zündschutzart : **Ex e**  
EN 60079-0, 60079-7,  
61241-0, 61241-1  
Nach Normen :  
Gerätegruppe : II  
Kategorie : 2 und 3  
Atmosphäre : G / D  
Zone : 1, 2 , 21, 22  
Temperaturen : -35°C / 95°C  
IP Schutzart : IP54  
IP 66/68 mit Flachdichtung

**ATEX Ex e -Plugs**  
**hexagon**  
**Polyamide / Polycarbonate**



**Material:**  
metric: Polyamide 6 glassfiber reinforced  
PG: Polycarbonat

- Characteristics:**
- hexagon
  - Warning: assembling of the threadsealing is compulsory for zones 21 & 22

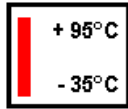
Type of production : **Ex e**  
EN 60079-0, 60079-7,  
61241-0, 61241-1  
Conformity with standards :  
Device group : II  
Category : 2 und 3  
Atmosphäre : G / D  
Zone : 1, 2 , 21, 22  
Temperature : -35°C / 95°C  
Protection degree: IP54  
IP 66/68 with flat seal



Aussen-Gewinde	SW H mm	Gewinde-länge (E) mm	Gesamt-länge (L) mm	Art.-Nr.	VE
Thread	SW H mm	Thread length mm	Complete Length mm	grey RAL 7035 Art-No.	Stck. PU pcs.
PG 9	19,0	10,0	13,4	G8900302	100
PG 11	22,0	10,0	13,8	G8900906	100
PG 13	24,0	10,0	13,5	G8901002	100
PG 16	27,0	10,0	13,5	G8900401	100
PG 21	32,0	12,0	16,5	G8901101	50
PG 29	41,0	12,0	18,0	G8900500	50
PG 36	55,0	14,0	19,5	G8900609	25
PG 42	60,0	16,0	23,5	G8900708	25
PG 48 NFC	65,0	16,0	25,5	G8900807	25
Aussen-Gewinde	SW mm	Gewinde-länge (E) mm	Gesamt-länge (L) mm	Art.-Nr.	VE
Thread	SW mm	Thread length mm	Complete Length mm	grey RAL 7001 Art-No.	Stck. PU pcs.
M 12 x 1.5	16,0	8,0	11,0	G4812210E	50
M 16 x 1.5	20,0	8,0	12,0	G4816210E	50
M 20 x 1.5	26,0	9,0	13,0	G4820210E	50
M 25 x 1.5	32,0	10,0	15,0	G4825210E	20
M 32 x 1.5	40,0	11,0	16,5	G4832210E	20
M 40 x 1.5	48,0	12,0	18,0	G4840210E	20
M 50 x 1.5	55,0	13,0	21,0	G4850210E	10
M 63 x 1.5	70,0	15,0	24,5	G4863210E	5



**ATEX Ex e -Reduktionen  
Polyamid / Polycarbonat**



**Material:**

metrisch: Polyamid 6 glassfaserverstärkt

PG: Polycarbonat

**Kennzeichen:**

- 6-kant
- Achtung: in Zonen 21 & 22 muss die Gewindedichtung montiert sein.

Zündschutzart :

Nach Normen :

Gerätegruppe :

Kategorie :

Atmosphäre :

Zone :

Temperaturen :

IP Schutzart :

**Ex e**

EN 60079-0, 60079-7,  
61241-0, 61241-1

II

2 und 3

G / D

1, 2 , 21, 22

-35°C / 95°C

IP54

IP 66/68 mit Flachdichtung

**ATEX Ex e-Reducer  
Polyamide / Polycarbonate**



**Material:**

metric: Polyamide 6 glassfiber reinforced

PG: Polycarbonate

**Characteristics:**

- hexagon
- Warning: assembling of the threadsealing is compulsory for zones 21 & 22

Type of production :

Conformity with standards :

Device group :

Category :

Atmosphäre :

Zone :

Temperature :

Protection degree:

**Ex e**

EN 60079-0, 60079-7,  
61241-0, 61241-1

II

2 und 3

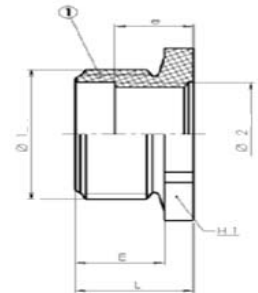
G / D

1, 2 , 21, 22

-35°C / 95°C

IP54

IP 66/68 with flat seal



**M → M**

Aussen-Gewinde	Innen-gewinde	SW mm	Gewinde-länge (E) mm	Gesamt-länge (L) mm	Art.-Nr. silbergrau RAL 7001	Art.-Nr. tiefsschwarz RAL9005	VE Stck.
Male thread	Female thread	SW mm	Thread length mm	Complete Length mm	Art.-No. silver grey RAL 7001	Art.-No. jet black RAL9005	PU pcs.
M 16 x 1.5	M 12 x 1.5	20,0	8,0	11,0	G6161290E	G6161210E	50
M 20 x 1.5	M 16 x 1.5	24,0	9,0	12,0	G6201690E	G6201610E	50
M 25 x 1.5	M 20 x 1.5	30,0	10,0	13,5	G6252090E	G6252010E	50
M 32 x 1.5	M 25 x 1.5	36,0	11,0	15,0	G6322590E	G6322510E	25
M 40 x 1.5	M 32 x 1.5	44,0	12,0	16,0	G6403290E	G6403210E	10
M 50 x 1.5	M 40 x 1.5	55,0	13,0	18,0	G6504090E	G6504010E	10
M 63 x 1.5	M 50 x 1.5	70,0	15,0	21,0	G6635090E	G6635010E	10

**PG → PG**

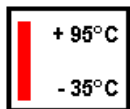
Aussen-Gewinde	Innen-gewinde	SW mm	Gewinde-länge (E) mm	Gesamt-länge (L) mm	Art.-Nr. lichtgrau RAL 7035	VE Stck.
Male thread	Female thread	SW mm	Thread length mm	Complete Length mm	Art.-No. licht grey RAL 7035	PU pcs.
PG 13	PG 11	24,0	9,0	22,0	G8911315	50
PG 16	PG 13	27,0	9,0	21,0	G8911612	50
PG 16	PG 11	27,0	9,0	14,0	G8911629	50
PG 21	PG 16	32,0	11,3	16,3	G8912114	20
PG 21	PG 13	32,0	11,0	16,0	G8912121	20
PG 21	PG 11	32,0	11,0	16,0	G8912138	20
PG 29	PG 21	41,0	12,0	18,0	G8912916	20
PG 29	PG 16	41,0	12,0	18,2	G8912923	20
PG 29	PG 13	41,0	12,0	18,3	G8912930	20
PG 36	PG 29	50,0	14,0	23,0	G8913616	10
PG 36	PG 21	55,0	14,0	21,0	G8913623	10
PG 36	PG 16	50,0	14,0	19,3	G8913630	10
PG 42	PG 29	55,0	16,0	23,0	G8914224	5
PG 42	PG 21	55,0	16,0	22,0	G8914231	5
PG 48	PG 29	60,0	16,0	22,0	G8914835	5



**ATEX Ex e -Erweiterungen**  
Polyamid / Polycarbonat

**ATEX Ex e -Enlanger**  
Polyamide / Polycarbonate

Ergänzungsteile  
Accessories



**Material:**  
metrisch: Polyamid 6 glassfaserverstärkt  
PG: Polycarbonat

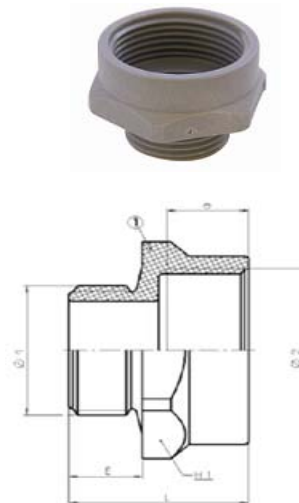
**Material:**  
metric: Polyamide 6 glassfiber reinforced  
PG: Polycarbonate

• Achtung: in Zonen 21 & 22 muss die Gewindedichtung montiert sein.

• Warning: assembling of the threadsealing is compulsory for zones 21 & 22

Zündschutzart : **Ex e**  
Nach Normen : EN 60079-0, 60079-7, 61241-0, 61241-1  
Gerätegruppe : II  
Kategorie : 2 und 3  
Atmosphäre : G / D  
Zone : 1, 2 , 21, 22  
Temperaturen : -35°C / 95°C  
IP Schutzart : IP54  
IP 66 / 68 mit Flachdichtung

Type of production : **Ex e**  
Conformity with standards : EN 60079-0, 60079-7, 61241-0, 61241-1  
Device group : II  
Category : 2 und 3  
Atmosphere : G / D  
Zone : 1, 2 , 21, 22  
Temperature : -35°C / 95°C  
Protection degree : IP54  
IP 66 / 68 with flat seal



**M → M**

Aussen-Gewinde Male thread	Innen-gewinde Female thread	SW mm	Gewinde-länge (E) Thread length mm	Gesamt-länge (L) Complete Length mm	Art.-Nr. silbergrau RAL 7001 Art.-No. silver grey RAL 7001	Art.-Nr. tiefschwarz RAL9005 Art.-No. jet black RAL9005	VE Stck. PU pcs.
M 12 x 1.5	M 16 x 1.5	20,0	8,0	19,0	G5121690E	G5121610E	50
M 16 x 1.5	M 20 x 1.5	24,0	8,0	20,0	G5162090E	G5165010E	50
M 20 x 1.5	M 25 x 1.5	30,0	9,0	22,0	G5202590E	G5202510E	50
M 25 x 1.5	M 32 x 1.5	36,0	10,0	24,0	G5253290E	G5253210E	20
M 32 x 1.5	M 40 x 1.5	44,0	11,0	26,0	G5324090E	G5324010E	20
M 40 x 1.5	M 50 x 1.5	55,0	12,0	28,0	G5405090E	G5405010E	20
M 50 x 1.5	M 63 x 1.5	70,0	13,0	32,0	G5506390E	G5506310E	10

**PG → PG**

Aussen-Gewinde Male thread	Innen-gewinde Female thread	SW mm	Gewinde-länge (E) Thread length mm	Gesamt-länge (L) Complete Length mm	Art.-Nr. silbergrau RAL9005 Art.-No. silver grey RAL 7035	VE Stck. PU pcs.
PG 11	PG 13	24,0	9,0	23,5	G8921116	50
PG 13	PG 16	27,0	9,0	23,0	G8921314	50
PG 16	PG 21	32,0	10,0	25,5	G8921611	50
PG 21	PG 29	41,0	10,0	28,5	G892213	20



**ATEX Ex e -Blindstopfen 6-kant  
Messing vernickelt**



**Material:**  
Messing vernickelt

- Kennzeichen:**
- NPT -/ PG-/ metrisches Gewinde
  - 6-kant
  - PG und metr. Gewinde:
  - 1A Blindstopfen mit Schlitz
  - 1B Blindstopfen ohne Schlitz

**Anwendungsbereiche:**

- für explosionsgefährdete Bereiche

Zündschutzart :

Nach Normen :

Gerätegruppe :

Kategorie :

Atmosphäre :

Zone :

Temperaturen :

IP Schutzart :

**Ex e**  
EN 60079-0, 60079-7,  
61241-0, 61241-1  
II  
2 und 3  
G / D  
1, 2 , 21, 22  
-40°C / 100°C  
IP54  
IP 66/68 mit Flachdichtung

**ATEX Ex e-Plugs hexagon  
nickel-plated brass**



**Material:**  
nickel-plated brass

- Characteristics:**
- NPT -/ PG-/ metric thread
  - hexagon
  - PG and metric thread:
  - 1A Plugs with slit
  - 1 B Plugs without slit

**Applications:**

- for hazardous locations

Type of protection :

Conformity with standards :

Device group :

Category :

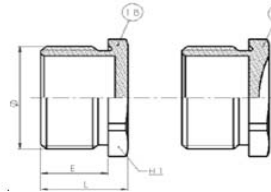
Atmosphäre :

Zone :

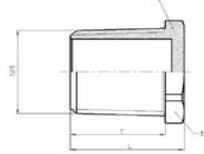
Temperature :

Protection degree :

**PG & ISO**



**NPT**



**Ex e**  
EN 60079-0, 60079-7,  
61241-0, 61241-1  
II  
2 und 3  
G / D  
1, 2 , 21, 22  
-40°C / 100°C  
IP54  
IP 66/68 with flatseal

Aussen-Gewinde	SW H mm	Gewinde-länge (E) mm	Gesamt-länge (L) mm	Art.-Nr. vernickelt	VE Stck.
Thread	SW H mm	Thread	Complete	Art.-No.	PU
Thread	mm	length (E) mm	Length (L) mm	nickel-plated	pcs.
M 12 x 1.5	14,0	10,0	13,0	D4812530	50
M 16 x 1.5	17,0	10,0	13,0	D4816530	50
M 20 x 1.5	23,0	10,0	13,0	D4820530	50
M 25 x 1.5	29,0	10,0	13,5	D4825530	20
M 32 x 1.5	39,0	10,0	14,0	D4832530	20
M 40 x 1.5	45,0	10,0	19,0	D4840530	20
M 50 x 1.5	58,0	15,0	20,0	D4850530	10
M 63 x 1.5	70,0	19,0	26,0	D4863530	5
M 75 x 1.5	80,0	24,0	32,0	D4875530	5

Aussen-Gewinde	SW H mm	Gewinde-länge (E) mm	Gesamt-länge (L) mm	Art.-Nr. vernickelt	VE Stck.
Thread	SW H mm	Thread	Complete	Art.-No.	PU
Thread	mm	length (E) mm	Length (L) mm	nickel-plated	pcs.
PG 7	14,0	10,0	13,0	D4607530	50
PG 9	17,0	10,0	13,0	D4609530	50
PG 11	19,0	10,0	13,0	D4611530	50
PG 13	21,0	10,0	13,0	D4613530	50
PG 16	23,0	10,0	13,0	D4616530	50
PG 21	29,0	12,0	16,0	D4621530	20
PG 29	39,0	12,0	16,0	D4629530	20
PG 36	50,0	14,0	18,5	D4636530	10
PG 42	58,0	16,0	21,0	D4642530	5
PG 48	64,0	16,0	22,0	D4648530	5
PG 48 DIN	64,0	16,0	22,0	D4649530	5

Aussen-Gewinde	SW H mm	Gewinde-länge (E) mm	Gesamt-länge (L) mm	Art.-Nr. vernickelt	VE Stck.
Thread	SW H mm	Thread	Complete	Art.-No.	PU
Thread	mm	length (E) mm	Length (L) mm	nickel-plated	pcs.
NPT 1/4"	15,0	15,0	18,0	D4606130	50
NPT 3/8"	19,0	15,0	18,0	D4608130	50
NPT 1/2"	23,0	20,0	20,0	D4612130	50
NPT 3/4"	29,0	20,0	24,0	D4620130	20
NPT 1"	36,0	25,0	29,0	D4628130	20
NPT 1" 1/4	45,0	25,0	29,0	D4635130	20
NPT 1" 1/2	50,0	26,0	31,0	D4641130	10
NPT 2"	64,0	27,0	33,0	D4647130	5
NPT 2" 1/2	80,0	40,0	48,0	D4650130	1
NPT 3"	100,0	40,0	48,0	D4660130	1
NPT 4"	125,0	45,0	55,0	D4680130	1



### ATEX Ex e -Blindstopfen rund Messing vernickelt

MS

IP  
66/68

+ 100°C  
- 40°C

ATEX



**Material:**  
Messing vernickelt  
O-Ring: Nitril  
**Kennzeichen:**  
• PG Gewinde  
• rund

**Zertifikat:**  
• LCIE 07 ATEX 0013 U / 01

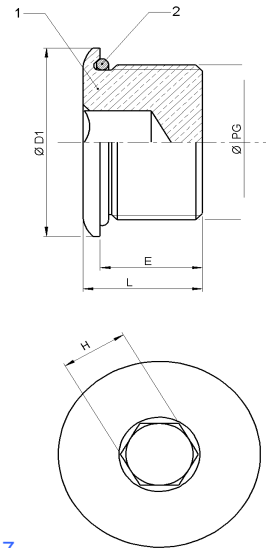
Zündschutzart : **Ex e**  
Nach Normen : EN 60079-0, 60079-7,  
61241-0, 61241-1  
Gerätegruppe : II / C  
Kategorie : 2 und 3  
Atmosphäre : G / D  
Zone : 1, 2 , 21, 22  
Temperaturen : -40°C / 100°C  
IP Schutzart : IP68/66

### ATEX Ex e -Plugs round nickel-plated brass

**Material:**  
nickel-plated brass  
O-ring: nitril  
**Characteristics:**  
• PG thread  
• round

**Certificate:**  
• LCIE 07 ATEX 0013 U / 01

Type of protection : **Ex e**  
Conformity with standards : EN 60079-0, 60079-7,  
61241-0, 61241-1  
Device group : II / C  
Category : 2 und 3  
Atmosphäre : G / D  
Zone : 1, 2 , 21, 22  
Temperature : -40°C / 100°C  
Protection degree : IP68/66



Aussen- Gewinde	SW H mm	Gewinde- länge (E) mm Thread	Gesamt- länge (L) mm Complete	Durchmesser mm diameter	Art.-Nr. vernickelt Art.-No. nickel-plated	VE Stck. PU pcs.
PG 7	6,0	15,0	17,5	16,0	D8907110	1
PG 9	10,0	15,0	17,5	20,0	D8909110	1
PG 11	10,0	15,0	17,5	22,0	D8911110	1
PG 13	10,0	15,0	17,5	24,0	D8913110	1
PG 16	10,0	15,0	17,5	27,0	D8916110	1
PG 21	15,0	15,0	17,5	32,0	D8921110	1
PG 29	15,0	15,0	18,0	42,0	D8929110	1
PG 36	15,0	15,0	18,0	52,0	D8936110	1
PG 42	20,0	15,0	18,0	60,0	D8942110	1
PG 48 DIN	20,0	15,0	18,5	65,0	D8949110	1
PG 48 NFC	20,0	15,0	18,5	65,0	D8948110	1



**ATEX Ex e Reduktionen**  
Messing vernickelt

MS

IP  
66/68

+ 100°C  
- 40°C

ATEX



**Material:**

Reduktion: Messing vernickelt

O-Ring: Nitril

**Kennzeichen:**

- metrisches-metrisches / PG-PG Gewinde
- 6-kant

**Anwendungsbereiche:**

- für explosionsgefährdete Bereiche

Zündschutzart :

**Ex e**

EN 60079-0, 60079-7,  
61241-0, 61241-1

Nach Normen :

**II**

Gerätegruppe :

Kategorie :

2 und 3

Atmosphäre :

G / D

Zone :

1, 2 , 21, 22

Temperaturen :

-40°C / 100°C

IP Schutzart :

IP68/66

**ATEX Ex e Reducer**  
nickel-plated brass

**Material:**

reduction: nickel-plated brass

O-ring: nitril

**Characteristics:**

- metric-metric / PG-PG thread
- hexagon

**Applications:**

- for hazardous locations

Type of protection :

**Ex e**

EN 60079-0, 60079-7,  
61241-0, 61241-1

Conformity with standards :

**II**

Device group :

2 und 3

Category :

G / D

Atmosphäre :

1, 2 , 21, 22

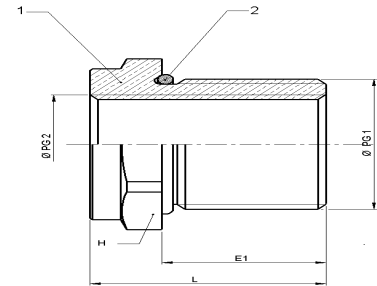
Zone :

Temperature :

-40°C / 100°C

Protection degree :

IP68/66



**ISO → ISO**

Aussen-Gewinde	Innen-gewinde	SW H mm	Gewinde-länge (E) mm	Gesamt-länge (L) mm	Art.-Nr. vernickelt	VE Stck.
Male thread	Female thread	SW H mm	Thread length (E) mm	Complete Length (L) mm	Art.-No. nickel-plated	PU pcs.
M16	M12	20	7	10	D6716122	1
M20	M16	24	7	10	D6720162	1
M25	M20	30	8	11,5	D6725202	1
M32	M25	36	8,5	12,5	D6732252	1
M40	M32	42	8,5	12,5	D6740322	1
M50	M40	55	9,5	14,5	D6750402	1
M63	M50	70	10,5	17,5	D6763502	1
M75	M63	80	11,5	19,5	D6775632	1

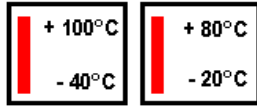
**PG → PG**

Aussen-Gewinde	Innen-gewinde	SW H mm	Gewinde-länge (E) mm	Gesamt-länge (L) mm	Art.-Nr. vernickelt	VE Stck.
Male thread	Female thread	SW H mm	Thread length (E) mm	Complete Length (L) mm	Art.-No. nickel-plated	PU pcs.
PG 9	PG 7	18,0	16,0	23,0	D8709075	1
PG 11	PG 7	22,0	16,0	23,0	D8711075	1
PG 11	PG 9	22,0	16,0	23,0	D8711095	1
PG 13	PG 9	24,0	16,0	23,0	D8713095	1
PG 13	PG 11	24,0	16,0	38,0	D8713115	1
PG 16	PG 11	26,0	16,0	23,0	D8716115	1
PG 16	PG 13	26,0	16,0	38,0	D8716135	1
PG 21	PG 13	30,0	16,0	23,0	D8721135	1
PG 21	PG 16	30,0	16,0	23,0	D8721165	1
PG 29	PG 16	40,0	16,0	23,0	D8729165	1
PG 29	PG 21	40,0	16,0	23,0	D8729215	1
PG 36	PG 21	50,0	16,0	26,0	D8736215	1
PG 36	PG 29	50,0	16,0	26,0	D8736295	1
PG 42	PG 29	60,0	16,0	28,0	D8742295	1
PG 42	PG 36	60,0	16,0	28,0	D8742365	1
PG 48	PG 36 DIN	64,0	16,0	28,0	D8749365	1
PG 48	PG 42 DIN	64,0	16,0	40,0	D8749425	1
PG 48	PG 36 NFC	64,0	16,0	28,0	D8748365	1
PG 48	PG 42 NFC	64,0	16,0	40,0	D8748425	1





**ATEX Ex e Erweiterungen**  
Messing vernickelt



**Material:**  
Erweiterung: Messing vernickelt  
O-Ring: Nitril  
**Kennzeichen:**  
• metrisches-metrisches / PG-PG Gewinde  
• 6 kant

**Anwendungsbereiche:**  
• für explosionsgefährdete Bereiche

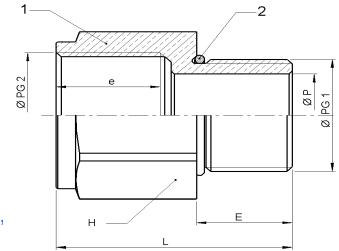
Zündschutzart : **Ex e**  
Nach Normen : EN 60079-0, 60079-7, 61241-0, 61241-1  
Gerätegruppe : II / C  
Kategorie : 2 und 3  
Atmosphäre : G / D  
Zone : 1, 2 , 21, 22  
Temperaturen : -40°C / 100°C  
IP Schutzart : IP68/66

**ATEX Ex e Enlarger**  
nickel-plated brass

**Material:**  
enlarger: nickel-plated brass  
O-ring: nitril  
**Characteristics:**  
• metric-metric / PG-PG thread  
• hexagon

**Applications:**  
• for hazardous locations

Type of protection : **Ex e**  
Conformity with standards : EN 60079-0, 60079-7, 61241-0, 61241-1  
Device group : II / C  
Category : 2 und 3  
Atmosphäre : G / D  
Zone : 1, 2 , 21, 22  
Temperature : -40°C / 100°C  
Protection degree: IP68/66



**ISO → ISO**

Aussen-Gewinde Male thread	Innen-gewinde Female thread	SW H mm SW H mm	Gewinde-länge (E) Thread length (E) mm	Gesamt-länge (L) Complete Length (L) mm	P mm P mm	Art.-Nr. vernickelt Art.-No. nickel-plated	VE Stck. PU pcs.
M12	M16	18,0	7,0	18,0	8,0	D5712162	1
M16	M20	22,0	7,0	18,0	12,0	D5716202	1
M20	M25	28,0	8,0	19,0	16,0	D5720252	1
M25	M32	36,0	8,5	20,5	21,0	D5725322	1
M32	M40	42,0	8,5	21,0	28,0	D5732402	1
M40	M50	52,0	9,5	22,0	35,0	D5740502	1
M50	M63	65,0	10,5	24,0	45,0	D5750632	1
M63	M75	80,0	11,5	26,0	58,0	D5763752	1

**PG → PG**

Aussen-Gewinde Male thread	Innen-gewinde Female thread	SW H mm SW H mm	Gewinde-länge (E) Thread length (E) mm	Gesamt-länge (L) Complete Length (L) mm	P mm P mm	Art.-Nr. vernickelt Art.-No. nickel-plated	VE Stck. PU pcs.
PG 7	PG 9	18,0	15,0	36,0	7,0	D8807095	1
PG 9	PG 11	22,0	15,0	36,0	10,0	D8809115	1
PG 11	PG 13	24,0	15,0	37,0	13,5	D8811135	1
PG 13	PG 16	27,0	15,0	37,0	15,0	D8813165	1
PG 16	PG 21	34,0	15,0	38,0	17,0	D8816215	1
PG 21	PG 29	44,0	15,0	38,0	22,0	D8821295	1
PG 29	PG 36	55,0	15,0	39,0	30,0	D8829365	1
PG 36	PG42	64,0	15,0	39,0	40,0	D8836425	1
PG 42	PG 48 DIN	70,0	15,0	40,0	47,0	D8842495	1
PG 42	PG 48 NFC	70,0	15,0	40,0	47,0	D8842485	1



## ATEX Ex e Übergangsstücke Messing vernickelt

MS

IP  
66/68

+ 100°C  
- 40°C

ATEX



### Material:

Messing vernickelt  
O-Ring: Nitril

### Kennzeichen:

- metrisches Außengewinde
- PG-Innengewinde
- 6-kant

### Anwendungsbereiche:

- für explosionsgefährdete Bereiche

Zündschutzart :

**Ex e**

Nach Normen :

EN 60079-0, 60079-7,  
61241-0, 61241-1

Gerätegruppe :

II

Kategorie :

2 und 3

Atmosphäre :

G / D

Zone :

1, 2, 21, 22

Temperaturen :

-40°C / 100°C

IP Schutzart :

IP66/68

## ATEX Ex e Adaptors nickel-plated brass

### Material:

nickel-plated brass  
O-ring: Nitril

### Characteristics:

- metric external thread
- PG internal thread
- hexagon

### Applications:

- for hazardous locations

Type of protection :

**Ex e**

Conformity with standards :

EN 60079-0, 60079-7,  
61241-0, 61241-1

Device group :

II

Category :

2 und 3

Atmosphäre :

G / D

Zone :

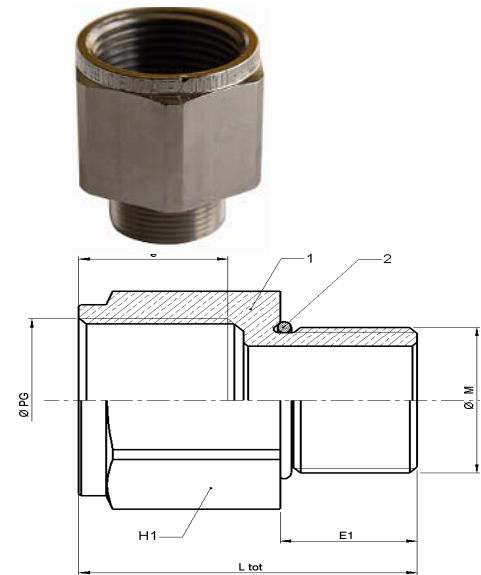
1, 2, 21, 22

Temperature :

-40°C / 100°C

Protection degree :

IP66/68

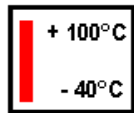


## M → PG

Aussen-Gewinde	Innen-gewinde	SW H mm SW H mm	Gewinde-länge (E) mm Thread length (E) mm	Gesamt-länge (L) mm Complete Length (L) mm	Art.-Nr. vernickelt Art.-No. nickel-plated	VE Stck. PU pcs.
M 12 x 1.5	PG 07	18,0	16,0	39,0	D8612075	1
M 12 x 1.5	PG 09	20,0	16,0	39,0	D8612095	1
M 16 x 1.5	PG 11	22,0	16,0	39,0	D8616115	1
M 16 x 1.5	PG 13	24,0	16,0	39,0	D8613135	1
M 20 x 1.5	PG 11	22,0	16,0	39,0	D8620115	1
M 20 x 1.5	PG 13	24,0	16,0	39,0	D8620135	1
M 20 x 1.5	PG 16	26,0	16,0	39,0	D8620165	1
M 25 x 1.5	PG 16	27,0	16,0	40,0	D8625165	1
M 25 x 1.5	PG 21	32,0	16,0	40,0	D8625215	1
M 25 x 1.5	PG 29	40,0	16,0	41,0	D8625295	1
M 32 x 1.5	PG 29	40,0	16,0	41,0	D8632295	1
M 32 x 1.5	PG 36	52,0	16,0	41,0	D8632365	1
M 40 x 1.5	PG 29	44,0	16,0	41,0	D8640295	1
M 40 x 1.5	PG 36	52,0	16,0	41,0	D8640365	1
M 50 x 1.5	PG 36	55,0	16,0	42,0	D8650365	1
M 50 x 1.5	PG 42	70,0	16,0	28,0	D8663425	1
M 63 x 1.5	PG 48 DIN	70,0	16,0	42,0	D8663495	1
M 63 x 1.5	PG 48 NFC	70,0	16,0	42,0	D8663485	1



### ATEX Ex e Übergangsstücke Messing vernickelt



**Material:**

Messing vernickelt

O-Ring: Nitril

**Kennzeichen:**

- PG-Außengewinde
- metrisches Innengewinde
- 6-kant

**Anwendungsbereiche:**

- für explosionsgefährdete Bereiche

Zündschutzart :

**Ex e**

EN 60079-0, 60079-7,  
61241-0, 61241-1

Nach Normen :

II

Gerätegruppe :

2 und 3

Kategorie :

G / D

Atmosphäre :

1, 2, 21, 22

Zone :

-40°C / 100°C

Temperaturen :

**IP Schutzart :**

**IP66/68**

### ATEX Ex e Adaptors nickel-plated brass

**Material:**

nickel-plated brass

O-ring: nitril

**Characteristics:**

- PG external thread
- metric internal thread
- hexagon

**Applications:**

- for hazardous locations

Type of protection :

**Ex e**

EN 60079-0, 60079-7,  
61241-0, 61241-1

Conformity with standards :

II

Device group :

2 und 3

Category :

G / D

Atmosphäre :

1, 2, 21, 22

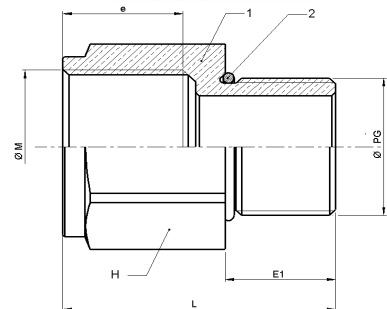
Zone :

-40°C / 100°C

Temperature :

**Protection degree :**

**IP66/68**



### PG → M

Aussen-Gewinde	Innen-gewinde	SW H	Gewinde-länge (E)	Gesamt-länge (L)	Art.-Nr. vernickelt	VE Stck.
Male thread	Female thread	SW H	Thread length (E)	Complete Length (L)	Art.-No. nickel-plated	PU pcs.
		mm	mm	mm		
PG 07	M 16 x 1.5	19,0	16,0	39,0	D8607165	1
PG 09	M 20 x 1.5	23,0	16,0	39,0	D8609205	1
PG 11	M 12 x 1.5	21,0	16,0	22,0	D8611125	1
PG 11	M 16 x 1.5	21,0	16,0	29,0	D8611165	1
PG 11	M 20 x 1.5	23,0	16,0	39,0	D8611205	1
PG 13	M 12 x 1.5	23,0	16,0	22,0	D8613125	1
PG 13	M 16 x 1.5	23,0	16,0	22,0	D8613165	1
PG 13	M 20 x 1.5	23,0	16,0	39,0	D8613205	1
PG 13	M 25 x 1.5	28,0	16,0	39,0	D8613255	1
PG 16	M 20 x 1.5	26,0	16,0	39,0	D8616205	1
PG 21	M 16 x 1.5	32,0	16,0	23,0	D8621165	1
PG 21	M 20 x 1.5	32,0	16,0	23,0	D8621205	1
PG 21	M 25 x 1.5	32,0	16,0	23,0	D8621255	1
PG 29	M 20 x 1.5	41,0	16,0	24,0	D8629205	1
PG 29	M 25 x 1.5	41,0	16,0	24,0	D8629255	1
PG 29	M 32 x 1.5	41,0	16,0	24,0	D8632325	1
PG 29	M 40 x 1.5	44,0	16,0	40,0	D8629405	1
PG 36	M 25 x 1.5	52,0	16,0	26,0	D8636255	1
PG 36	M 32 x 1.5	52,0	16,0	26,0	D8632325	1
PG 36	M 40 x 1.5	52,0	16,0	26,0	D8636405	1
PG 36	M 50 x 1.5	55,0	16,0	40,0	D8636505	1
PG 42	M 40 x 1.5	58,0	16,0	26,0	D8642405	1
PG 42	M 63 x 1.5	70,0	16,0	41,0	D8642635	1
PG 48 DIN	M 63 x 1.5	70,0	16,0	41,0	D8649635	1
PG 48 DIN	M 75 x 1.5	80,0	16,0	44,0	D8649755	1
PG 48 NFC	M 63 x 1.5	70,0	16,0	41,0	D8648635	1
PG 48 NFC	M 75 x 1.5	80,0	16,0	44,0	D8648755	1



### ATEX Ex e Übergangsstücke Messing vernickelt

MS

IP  
66/68

+ 100°C  
- 40°C

ATEX



**Material:**

Messing vernickelt  
O-Ring: Nitril

**Kennzeichen:**

- PG-Außengewinde
- NPT Innengewinde
- 6-kant

**Anwendungsbereiche:**

- für explosionsgefährdete Bereiche

Zündschutzart :

**Ex e**

Nach Normen :

EN 60079-0, 60079-7,  
61241-0, 61241-1

Gerätegruppe :

**II**

Kategorie :

2 und 3

Atmosphäre :

G / D

Zone :

1, 2 , 21, 22

Temperaturen :

-40°C / 100°C

IP Schutzart :

IP68/66

### ATEX Ex e Adaptors nickel-plated brass

**Material:**

nickel-plated brass  
O-ring: nitril

**Characteristics:**

- PG external thread
- NPT internal thread
- hexagon

**Applications:**

- for hazardous locations

Type of protection :

**Ex e**

Conformity with standards :

EN 60079-0, 60079-7,  
61241-0, 61241-1

Device group :

**II**

Category :

2 und 3

Atmosphäre :

G / D

Zone :

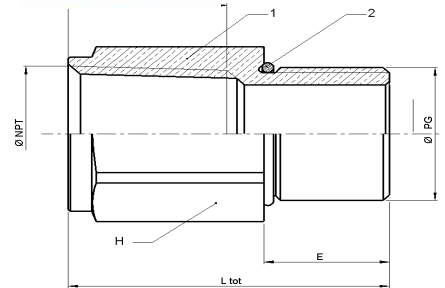
1, 2 , 21, 22

Temperature :

-40°C / 100°C

Protection degree:

IP68/66



### PG → NPT

Aussen-Gewinde	Innen-gewinde	SW H	Gewinde-länge (E)	Gesamt-länge (L)	Art.-Nr. vernickelt	VE Stck.
Male thread	Female thread	mm	mm	mm	Art.-No. nickel-plated	PU pcs.
		SW H	Thread length (E)	Complete Length (L)		
		mm	mm	mm		
PG 09	NPT 1/2"	24,0	16,0	43,0	D8609145	1
PG 11	NPT 1/2"	24,0	16,0	42,0	D8611145	1
PG 13	NPT 1/2"	24,0	16,0	41,0	D8613145	1
PG 13	NPT 3/4"	30,0	16,0	44,0	D8613195	1
PG 16	NPT 1/2"	26,0	16,0	40,0	D8616145	1
PG 16	NPT 3/4"	30,0	16,0	43,0	D8616195	1
PG 21	NPT 1/2"	32,0	16,0	24,0	D8621145	1
PG 21	NPT 3/4"	32,0	16,0	40,0	D8621195	1
PG 21	NPT 1"	38,0	16,0	49,0	D8621285	1
PG 29	NPT 1/2"	41,0	16,0	24,0	D8629145	1
PG 29	NPT 3/4"	41,0	16,0	24,0	D8629195	1
PG 29	NPT 1"	41,0	16,0	24,0	D8629284	1
PG 29	NPT 1"1/4	50,0	16,0	50,0	D8629355	1
PG 36	NPT 1"1/2	52,0	16,0	50,0	D8636415	1
PG 42	NPT 2"	64,0	16,0	54,0	D8642475	1



## ATEX Ex e -Übergangsstücke Messing vernickelt

MS

IP  
66/68

+ 100°C  
- 40°C

ATEX

**Material:**  
Messing vernickelt

- Kennzeichen:**
- NPT-Außengewinde
  - PG-Innengewinde
  - 6-kant

- Anwendungsbereiche:**
- für explosionsgefährdete Bereiche

Zündschutzart : **Ex e**  
 Nach Normen : EN 60079-0, 60079-7, 61241-0, 61241-1  
 Gerätegruppe : II  
 Kategorie : 2 und 3  
 Atmosphäre : G / D  
 Zone : 1, 2 , 21, 22  
 Temperaturen : -40°C / 100°C  
**IP Schutzart :** **IP66/68**

## ATEX Ex e -Adaptors nickel-plated brass

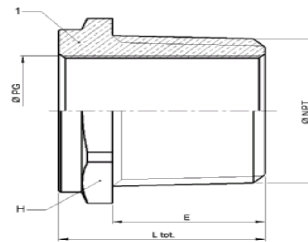


**Material:**  
nickel-plated brass

- Characteristics:**
- NPT external thread
  - PG internal thread
  - hexagon

- Applications:**
- for hazardous locations

Type of protection : **Ex e**  
 Conformity with standards : EN 60079-0, 60079-7, 61241-0, 61241-1  
 Device group : II  
 Category : 2 und 3  
 Atmosphäre : G / D  
 Zone : 1, 2 , 21, 22  
 Temperature : -40°C / 100°C  
**Protection degree :** **IP66/68**

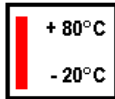


### NPT → PG

Aussen-Gewinde Male thread	Innen-gewinde Female thread	SW mm SW mm	Gewinde-länge (E) Thread length mm	Gesamt-länge (L) Complete Length mm	Art.-Nr. vernickelt Art.-No. nickel-plated	VE Stck. PU pcs.
NPT 1/2"	PG 09	24,0	20,0	27,0	D8614091	1
NPT 1/2"	PG 11	24,0	20,0	43,0	D8614111	1
NPT 1/2"	PG 13	24,0	20,0	43,0	D8614131	1
NPT 1/2"	PG 16	26,0	20,0	43,0	D8614171	1
NPT 1/2"	PG 21	32,0	20,0	43,0	D8614211	1
NPT 3/4"	PG 13	30,0	20,0	27,0	D8619131	1
NPT 3/4"	PG 16	30,0	20,0	43,0	D8619161	1
NPT 3/4"	PG 21	32,0	20,0	43,0	D8619211	1
NPT 1"	PG 21	36,0	25,0	48,0	D8628210	1
NPT 1"	PG 29	41,0	25,0	50,0	D8628290	1
NPT 1 1/2"	PG 36	52,0	26,0	52,0	D8641361	1
NPT 2"	PG 42	64,0	27,0	39,0	D8647421	1



## ATEX Ex e Übergangsstücke Messing vernickelt



### Material:

Messing vernickelt  
O-Ring: Nitril

### Kennzeichen:

- PG / GAZ Gewinde
- 6-kant

### Anwendungsbereiche:

- für explosionsgefährdete Bereiche

Zündschutzart :

**Ex e**

EN 60079-0, 60079-7,  
61241-0, 61241-1

Nach Normen :

II

Gerätegruppe :

2 und 3

Kategorie :

G / D

Atmosphäre :

1, 2, 21, 22

Zone :

Temperaturen :

-40°C / 100°C

IP Schutzart :

IP66/68

## ATEX Ex e Adaptors nickel-plated brass

### Material:

nickel-plated brass  
O-ring: nitril

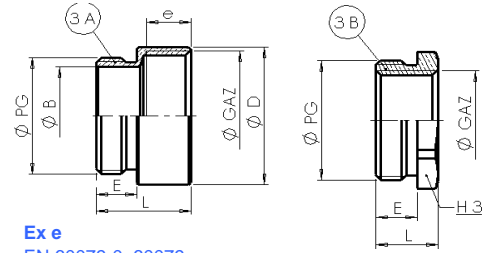
### Characteristics:

- PG / GAZ external thread
- hexagon

### Applications:

- for hazardous locations

Type of protection :



**Ex e**

EN 60079-0, 60079-7,  
61241-0, 61241-1

Conformity with standards :

Device group :

II

Category :

2 und 3

Atmosphäre :

G / D

Zone :

1, 2, 21, 22

Temperature :

-40°C / 100°C

Protection degree :

IP66/68

## PG → GAZ

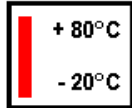
Aussen-Gewinde	Innen-gewinde	Typ A Ø D mm	Typ B H3 mm	Gewinde- länge (E) mm	e mm	Gesamt- länge (L) mm	Art.-Nr. vernickelt	VE Stck.
Male thread	Female thread	Type A Ø D mm	Type B H3 mm	Thread length (E) mm	e mm	Complete Length (L) mm	Art.-No. nickel-plated	PU pcs.
PG 07	G 1/4"	17,0		6,0	9	17	J7070140	1
PG 09	G 1/4"	17,0		7,0	9	17	J7090140	1
PG 09	G 3/8"	19,0		7,0	9	18	J7091140	1
PG 09	G 1/2"	24,0		7,0	11	20	J7093140	1
PG 11	G 3/8"	20,0		7,0	9	18	J7111140	1
PG 11	G 1/2"	24,0		7,0	11	20	J7113140	1
PG 13	G 3/8"		24,0	8,0		12	J7131140	1
PG 13	G 1/2"	24,0		8,0	11	22	J7133140	1
PG 16	G 3/8"		24,0	8,0		12	J7161140	1
PG 16	G 1/2"	24,0		8,0	11	22	J7164140	1
PG 16	G 3/4"	30,0		8,0	13	24	J7165140	1
PG 21	G 3/4"	30,0		10,0	13	26	J7215140	1
PG 21	G 1"	38,0		10,0	16	32	J7216140	1
PG 29	G 1"		39,0	10,0		16	J7296140	1
PG 29	G 1" 1/8	40,0		10,0	16	32	J7296240	1
PG 29	G 1" 1/4	45,0		10,0	19	35	J7297140	1
PG 36	G 1" 1/4		50,0	10,0		19	J7367140	1
PG 36	G 1" 1/2	50,0		10,0	19	34	J7368140	1
PG 42	G 1" 1/2		60,0	12,0		21	J7428140	1
PG 42	G 1" 3/4	60,0		12,0	21	38	J7428240	1
PG 48	G 1" 3/4		64,0	12,0		21	J7488240	1
PG 48	G 2"	64,0		12,0	23	40	J7489140	1
PG 48 DIN	G 1" 3/4		64,0	12,0		21	J7498240	1
PG 48 DIN	G 2"	64,0		12,0	23	40	J7499140	1



## ATEX Ex e Übergangsstücke Messing vernickelt

MS

IP  
66/68



ATEX



### Material:

Messing vernickelt

O-Ring: Nitril

### Kennzeichen:

- GAZ / PG Gewinde
- 6-kant

### Anwendungsbereiche:

- für explosionsgefährdete Bereiche

Zündschutzart :

**Ex e**

EN 60079-0, 60079-7,  
61241-0, 61241-1

Nach Normen :

II

Gerätegruppe :

2 und 3

Kategorie :

G / D

Atmosphäre :

Zone :

1, 2, 21, 22

Temperaturen :

-40°C / 100°C

IP Schutzart :

IP66/68

## ATEX Ex e Adaptors nickel-plated brass

### Material:

nickel-plated brass

O-ring: nitril

### Characteristics:

- GAZ / PG external thread
- hexagon

### Applications:

- for hazardous locations

Type of protection :

Conformity with standards :

Device group :

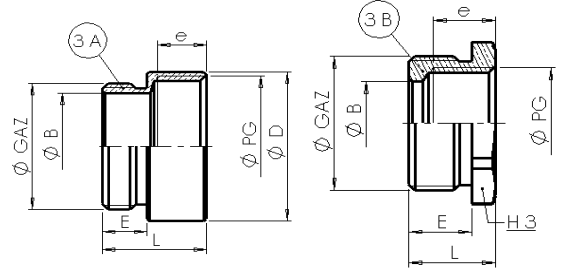
Category :

Atmosphäre :

Zone :

Temperature :

Protection degree :



**Ex e**

EN 60079-0, 60079-7,  
61241-0, 61241-1

II

2 und 3

G / D

1, 2, 21, 22

-40°C / 100°C

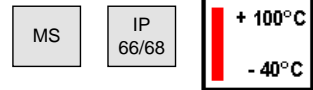
IP66/68

## GAZ → PG

Aussen-Gewinde	Innen-gewinde	Typ A Ø D mm	Typ B H3 mm	Gewinde- länge (E) mm	e mm	Gesamt- länge (L) mm	Art.-Nr. vernickelt	VE Stck.
Male thread	Female thread	Type A Ø D mm	Type B H3 mm	Thread length (E) mm	e mm	Complete Length (L) mm	Art.-No. nickel-plated	PU pcs.
G 1/4"	PG 07	14,0		8,0	10	20	J7060140	1
G 1/4"	PG 09	17,0		8,0	10	20	J7061140	1
G 3/8"	PG 09	17,0		8,0	10	20	J7081140	1
G 3/8"	PG 11	20,0		8,0	8	19	J7082140	1
G 3/8"	PG 13	22,0		8,0	9	20	J7083140	1
G 3/8"	PG 16	24,0		8,0	9	20	J7084140	1
G 1/2"	PG 09		22,0	10,0	10	13	J7121140	1
G 1/2"	PG 11	22,0		10,0	8	21	J7122140	1
G 1/2"	PG 13	22,0		10,0	9	22	J7123140	1
G 1/2"	PG 16	24,0		10,0	9	22	J7124140	1
G 3/4"	PG 16		28,0	12,0	12,5	16	J7204140	1
G 3/4"	PG 21	30,0		12,0	11	27	J7205140	1
G 1"	PG 21		36,0	15,0	12,5	20	J7285140	1
G 1"	PG 29	39,0		15,0	11	30	J7286140	1
G 1" 1/8	PG 29	39,0		15,0	11	30	J7326140	1
G 1" 1/4	PG 29	43,0		17,0	11	32	J7356140	1
G 1" 1/4	PG 36	50,0		17,0	11	32	J7357140	1
G 1" 1/2	PG 36	50,0		17,0	11	32	J7417140	1
G 1" 1/2	PG 42	58,0		17,0	13	34	J7418140	1
G 1" 3/4	PG 42	58,0		19,0	13	36	J7438140	1
G 1" 3/4	PG 48 DIN	64,0		19,0	13	36	J7439240	1
G 2"	PG 48	64,0		20,0	13	37	J7479140	1
G 2"	PG 48 DIN	64,0		20,0	13	37	J7479240	1



**ATEX Ex d/e 1 F**  
**SIB-DEF Kabelverschraubung**



**Material:**  
Messing vernickelt  
Dichtung: Neopren  
Hinweis: Auch mit Viton Dichtung lieferbar  
Viton Temperatur: -20 bis 200°C  
Edelstahl auf Anfrage

**Kennzeichen:**  
. metrisches Gewinde  
Für normale Kabel geeignet.  
**Funktion 1:**  
- Abdichtung des Kabels.  
Ohne Zugentlastung

**Anwendungsbereiche:**  
• für explosionsgefährdete Bereiche  
• Maschinen und Apparatebau  
• Mess- und Regeltechnik  
• Anlagenbau

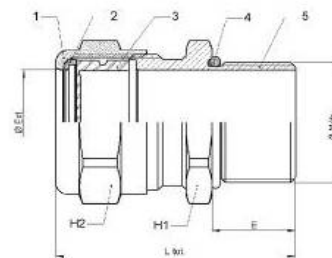
**ATEX Ex d/e 1 F**  
**SIB-DEF Cable Gland**



**Material:**  
Nickel plated brass  
Seal: Neoprene  
**Note:** also available with viton seal  
viton temperature : -20 to 200°C  
stainless steel on request

**Characteristics:**  
. metric thread  
. For non-armoured cables

**Function 1:**  
- Cable watertightness  
No traction relief  
**Applications:**  
• for hazardous locations  
• machine- and apparatus engineering  
• measuring and control engineering  
• plant installations



Zündschutzart :  
Nach Normen :

**Ex d/e**  
EN 60079-0, 60079-1,  
60079-7, 61241-0, 61241-1

Type of protection : **Ex d/e**  
Conformity with standarts : EN 60079-0, 60079-1,  
EN 60079-7, 61241-0, 61241-1

Gerätegruppe :  
Kategorie :  
Atmosphäre :  
Zone :  
Temperature :  
IP Schutzart :

II C  
2 und 3  
G / D  
1, 2 , 21, 22  
-40°C / 100°C  
IP 68 / 66

Device group : II C  
Category : 2 und 3  
Atmosphäre : G / D  
Zone : 1, 2, 21, 22  
Temperature : -40°C / 100°C  
Protection degree : IP 68 / 66

Außengewinde	N°	min.	Klemmbereich max.	SW H1 mm	SW H2 mm	E mm	L mm	Art. Nr. vernickelt
Thread	N°	min.	clamping range max.	SW H1 mm	SW H2 mm	E mm	L mm	Art. No. nickel-plated
M12 x 1,5	4	4,0	8,0	17,0	17,0	16,0	42,0	4111129
M16 x 1,5	4	4,0	8,0	20,0	17,0	16,0	42,0	4111159
M 16 x 1,5	5	7,0	12,0	20,0	20,0	16,0	39,0	4111169
M 20 x 1,5	5	7,0	12,0	24,0	20,0	16,0	39,0	4111209
M 20 x 1,5	6	9,0	16,0	24,0	24,0	16,0	43,0	4111219
M 25 x 1,5	5	7,0	12,0	28,0	20,0	16,0	39,0	4111259
M 25 x 1,5	6	9,0	16,0	28,0	24,0	16,0	43,0	4111269
M 25 x 1,5	7	13,0	20,5	30,0	30,0	16,0	44,0	4111279
M 32 X 1,5	7	13,0	21,0	36,0	30,0	16,0	44,0	4111329
M 32 X 1,5	8	17,0	27,0	40,0	40,0	16,0	61,0	4111339
M 40 X 1,5	8	17,0	27,5	44,0	40,0	16,0	61,0	4111409
M 40 X 1,5	9	22,0	34,0	48,0	48,0	16,0	67,0	4111419
M 50 X 1,5	9	22,0	34,0	55,0	48,0	16,0	67,0	4111509
M 50 X 1,5	10	28,0	41,0	55,0	55,0	16,0	72,0	4111519
M 63 X 1,5	11	34,0	47,5	65,0	64,0	16,0	82,0	4111639
M 63 X 1,5	12	39,0	54,0	70,0	70,0	16,0	84,0	4111649
M 75 X 1,5	12	39,0	54,0	80,0	70,0	16,0	84,0	4111759
M 75 X 1,5	13	48,0	65,0	85,0	90,0	18,0	100,0	4111769
M 80 X 1,5	13	48,0	65,0	85,0	90,0	18,0	100,0	4111809
M 80 X 1,5	14	55,0	71,0	95,0	100,0	20,0	112,0	4111819
M 90 X 1,5	14	55,0	71,0	95,0	100,0	20,0	112,0	4111909
M 90 X 1,5	15	65,0	83,0	110,0	125,0	22,0	123,0	4111919
M 100 X 1,5	15	65,0	79,0	110,0	125,0	22,0	123,0	4111989
M 100 X 1,5	16	74,0	89,0	120,0	125,0	22,0	123,0	4111999





**ATEX Ex d/e 1 F**  
**SIB-DEF Kabelverschraubung**

MS	IP 66/68	



**Material:**  
Messing vernickelt  
Dichtung: Neopren  
Hinweis: Auch mit Viton Dichtung lieferbar  
Viton Temperatur: -20 bis 200°C  
Edelstahl auf Anfrage

**Kennzeichen:**  
. NPT Gewinde  
Für normale Kabel geeignet.

**Funktion 1:**  
- Abdichtung des Kabels.  
Ohne Zugentlastung

- Anwendungsbereiche:**
- für explosionsgefährdete Bereiche
  - Maschinen und Apparatebau
  - Mess- und Regeltechnik
  - Anlagenbau

Zündschutzart : **Ex d/e**  
Nach Normen : EN 60079-0, **60079-1**, 60079-7, 61241-0, 61241-1  
Gerätegruppe : II C  
Kategorie : 2 und 3  
Atmosphäre : G / D  
Zone : 1, 2, 21, 22  
Temperature : -40°C / 100°C  
IP Schutzart : IP 68 / 66

**ATEX Ex d/e 1 F**  
**SIB-DEF Cable Gland**

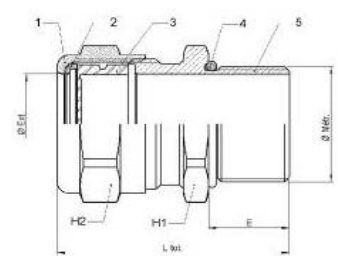
**Material:**  
Nickel plated brass  
Seal: Neoprene  
Note: also available with viton seal  
viton temperature : -20 to 200°C  
stainless steel on request

**Characteristics:**  
. NPT thread  
. For non-armoured cables

**Function 1:**  
- Cable watertightness  
No traction relief

- Applications:**
- for hazardous locations
  - machine- and apparatus engineering
  - measuring and control engineering
  - plant installations

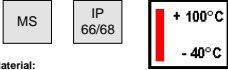
Type of protection : **Ex d/e**  
Conformity with standarts : EN 60079-0, **60079-1**, EN 60079-7, 61241-0, 61241-1  
Device group : II C  
Category : 2 and 3  
Atmosphäre : G / D  
Zone : 1, 2, 21, 22  
Temperature : -40°C / 100°C  
Protection degree : IP 68 / 66



Außengewinde Thread	N°	Klemmbereich clamping range		SW H1 mm	Sw H2 mm	E mm	L mm	Art. Nr. vernickelt Art. No. nickel-plated
		min.	max.					
NPT 1/4"	4	4,0	8,0	17,0	17,0	16,0	42,0	4131029
NPT 3/8"	4	4,0	8,0	20,0	17,0	16,0	42,0	4131039
NPT 1/2"	4	4,0	8,0	24,0	17,0	20,0	46,0	4131049
NPT 3/8"	5	7,0	12,0	20,0	20,0	16,0	39,0	4131059
NPT 1/2"	5	7,0	12,0	24,0	20,0	20,0	43,0	4131109
NPT 1/2"	6	9,0	16,0	24,0	24,0	20,0	47,0	4131119
NPT 3/4"	5	7,0	12,0	28,0	20,0	16,0	43,0	4131209
NPT 3/4"	6	9,0	16,0	28,0	24,0	20,0	47,0	4131219
NPT 3/4"	7	13,0	20,5	30,0	30,0	20,0	48,0	4131229
NPT 1"	7	13,0	21,0	36,0	30,0	25,0	53,0	4131309
NPT 1"	8	17,0	27,0	40,0	40,0	25,0	70,0	4131319
NPT 1" 1/4	8	17,0	27,5	44,0	40,0	25,0	70,0	4131349
NPT 1" 1/4	9	22,0	34,0	48,0	48,0	25,0	76,0	4131359
NPT 1" 1/2	9	22,0	34,0	55,0	48,0	26,0	77,0	4131369
NPT 1" 1/2	10	28,0	41,0	55,0	55,0	26,0	82,0	4131379
NPT 2"	11	34,0	47,5	68,0	64,0	27,0	83,0	4131409
NPT 2"	12	39,0	53,5	70,0	70,0	27,0	95,0	4131419
NPT 2" 1/2	12	39,0	54,0	80,0	70,0	40,0	108,0	4131459
NPT 2" 1/2	13	48,0	64,5	85,0	90,0	40,0	122,0	4131469
NPT 3"	14	55,0	71,0	95,0	100,0	42,0	134,0	4131509
NPT 3"	15	65,0	79,0	110,0	125,0	42,0	143,0	4131519
NPT 3" 1/2	15	65,0	79,0	110,0	125,0	43,0	144,0	4131559
NPT 3" 1/2	16	74,0	89,0	120,0	125,0	43,0	144,0	4131569



**ATEX Ex d/e 3F  
SIB-DEF Kabelverschraubung**



**Material:**  
Messing vernickelt  
Dichtung: Neopren  
O-Ring: Nitril  
Hinweis: Auch mit Viton Dichtung lieferbar  
Viton Temperatur: -20 bis 200°C  
Edelstahl auf Anfrage

**Kennzeichen:**  
· metrisches Gewinde  
Für geschirmte (armierte) Kabel geeignet

**Funktion 1:**  
Abdichtung vom Mantel des Kabels (nach dem Schirmkontakt)

**Funktion 2:**  
Abschirmung des Kabels

**Funktion 3:**  
Zugentlastung

**Anwendungsbereiche:**  
• Für explosionsgefährdete Bereiche

- Maschinen und Apparatebau
- Mess- und Regeltechnik
- Anlagenbau

**ATEX Ex d/e 3F  
SIB-DEF Cable Gland**

**Material:**  
Nickel plated brass  
Seal: Neoprene  
O-Ring: Nitril  
Note: also available with viton seal  
viton temperature : -20 to 200°C  
stainless steel on request

**Characteristics:**  
· metric thread  
Suitable for armoured cables

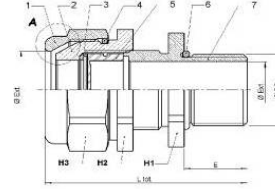
**Function 1:**  
Cable watertightness (after shielding connection)

**Function 2:**  
Shielding connection

**Function 3:**  
Traction relief

**Applications:**

- for hazardous locations
- machine- and apparatus engineering
- measuring and control engineering
- plant installations



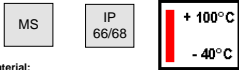
Zündschutzart : **Ex d/e**  
Nach Normen : EN 60079-0, **60079-1**,  
60079-7, 61241-0,  
61241-1  
Gerätegruppe : II C  
Kategorie : 2 und 3  
Atmosphäre : G / D  
Zone : 1, 2, 21, 22  
Temperature : -40°C / 100°C  
IP Schutzart : IP 68 / 66

Type of protection : **Ex d/e**  
Conformity with standards : EN 60079-0, **60079-1**,  
EN 60079-7, 61241-0,  
61241-1  
Device group : II C  
Category : 2 and 3  
Atmosphäre : G / D  
Zone : 1, 2, 21, 22  
Temperature : -40°C / 100°C  
Protection degree : IP 68 / 66

Außengewinde Thread	N° N°	Klemmbereich Zugentlastung		F mm F mm	SW H1 mm SW H1 mm	SW H2 mm SW H2 mm	SW H3 mm SW H3 mm	E mm E mm	L mm L mm	Art. Nr. vernickelt Art. No. nickel-plated
		min. min.	max. max.							
M 12 x 1.5	5	4,0	7,0	1,00	18,0	20,0	20,0	16,0	47,0	4113129
M 16 x 1.5	5	4,0	8,0	1,00	20,0	20,0	20,0	16,0	47,0	4113169
M 16 x 1.5	6	6,0	12,0	1,25	18,0	24,0	24,0	16,0	51,0	4113179
M 20 x 1.5	5	4,0	8,0	1,00	24,0	20,0	20,0	16,0	47,0	4113209
M 20 x 1.5	6	6,0	12,0	1,25	24,0	24,0	24,0	16,0	51,0	4113219
M 20 x 1.5	7	8,5	15,0	1,25	28,0	30,0	30,0	16,0	51,0	4113229
M 25 x 1.5	6	6,0	12,0	1,25	28,0	24,0	24,0	16,0	51,0	4113259
M 25 x 1.5	7	8,5	15,5	1,25	30,0	30,0	30,0	16,0	51,0	4113269
M 25 x 1.5	8	12,0	19,5	1,60	36,0	40,0	40,0	16,0	60,0	4113279
M 32 X 1.5	8	12,0	20,5	1,60	40,0	40,0	40,0	16,0	60,0	4113329
M 32 X 1.5	9	16,0	25,5	2,00	44,0	48,0	48,0	16,0	66,0	4113339
M 40 X 1.5	9	16,0	27,5	2,00	48,0	48,0	48,0	16,0	66,0	4113409
M 40 X 1.5	10	21,0	33,0	2,00	50,0	55,0	55,0	16,0	68,0	4113419
M 50 X 1.5	10	21,0	34,0	2,00	55,0	55,0	55,0	16,0	68,0	4113509
M 50 X 1.5	11	27,0	41,0	2,50	64,0	64,0	64,0	16,0	73,0	4113519
M 63 X 1.5	12	33,0	46,0	2,50	70,0	70,0	70,0	16,0	75,0	4113639
M 63 X 1.5	13	40,0	54,0	2,50	80,0	85,0	85,0	16,0	86,0	4113649
M 75 X 1.5	13	40,0	54,0	2,50	85,0	85,0	85,0	18,0	86,0	4113759
M 75 X 1.5	14	47,0	65,0	2,50	90,0	95,0	95,0	18,0	95,0	4113769
M 80 X 1.5	14	47,0	65,0	2,50	95,0	95,0	95,0	20,0	95,0	4113809
M 80 X 1.5	15	54,0	71,0	3,15	100,0	110,0	110,0	20,0	107,0	4113819
M 90 X 1.5	15	54,0	74,0	3,15	110,0	110,0	110,0	22,0	107,0	4113909
M 90 X 1.5	16	63,0	79,0	3,15	110,0	120,0	120,0	22,0	107,0	4113919
M 100 X 1.5	16	63,0	82,0	3,15	120,0	120,0	120,0	22,0	107,0	4113999



**ATEX Ex d/e 3F  
SIB-DEF Kabelverschraubung**



**Material:**  
Messing vernickelt  
Dichtung: Neopren  
O-Ring: Nitril  
Hinweis: Auch mit Viton Dichtung lieferbar  
Viton Temperatur: -20 bis 200°C  
Edelstahl auf Anfrage

**Kennzeichen:**  
. NPT Gewinde  
Für geschirmte (armierte) Kabel geeignet

**Function 1:**  
Abdichtung vom Mantel des Kabels (nach dem Schirmkontakt)

**Function 2:**  
Abschirmung des Kabels

**Function 3:**  
Zugentlastung

- Anwendungsbereiche:**
- für explosionsgefährdete Bereiche
  - Maschinen und Apparatebau
  - Mess- und Regeltechnik
  - Anlagenbau

Zündschutzart : **Ex d/e**  
Nach Normen : EN 60079-0, **60079-1**,  
60079-7, 61241-0,  
61241-1

Gerätegruppe : II C  
Kategorie : 2 und 3  
Atmosphäre : G / D  
Zone : 1, 2, 21, 22  
Temperatur : -40°C / 100°C  
IP Schutzart : IP 68 / 66

**ATEX Ex d/e 3F  
SIB-DEF Cable Gland**

**Material:**  
Nickel plated brass  
Seal: Neoprene  
O-Ring: Nitril  
Note: also available with viton seal  
Viton temperature : -20 to 200°C  
stainless steel on request

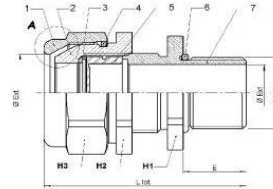
**Characteristics:**  
. NPT thread  
Suitable for armoured cables

**Function 1:**  
Cable watertightness (after shielding connection)

**Function 2:**  
Shielding connection

**Function 3:**  
Traction relief

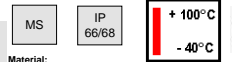
- Applications:**
- for hazardous locations
  - machine- and apparatus engineering
  - measuring and control engineering
  - plant installations



Außengewinde Thread	N°	Klemmbereich Zugentlastung		F mm	SW H1 mm	SW H2 mm	SW H3 mm	E mm	L mm	Art. Nr. vernickelt
		min.	max.							
NPT 1/4"	5	4,0	7,0	1,00	18,0	20,0	20,0	16,0	47,0	4133019
NPT 3/8"	5	4,0	8,0	1,00	20,0	20,0	20,0	16,0	47,0	4133059
NPT 3/8"	6	6,0	12,0	1,25	22,0	24,0	24,0	16,0	51,0	4133069
NPT 1/2"	5	4,0	8,0	1,00	24,0	20,0	20,0	20,0	51,0	4133109
NPT 1/2"	6	6,0	12,0	1,25	24,0	24,0	24,0	20,0	55,0	4133119
NPT 1/2"	7	8,5	15,0	1,25	24,0	30,0	30,0	20,0	55,0	4133129
NPT 3/4"	6	6,0	12,0	1,25	28,0	24,0	24,0	20,0	55,0	4133209
NPT 3/4"	7	8,5	15,5	1,25	30,0	30,0	30,0	20,0	55,0	4133219
NPT 3/4"	8	12,0	19,5	1,60	30,0	40,0	40,0	20,0	64,0	4133229
NPT 1"	8	12,0	20,5	1,60	36,0	40,0	40,0	25,0	64,0	4133309
NPT 1"	9	16,0	25,5	2,00	40,0	48,0	48,0	25,0	75,0	4133319
NPT 1 1/4"	9	16,0	27,5	2,00	44,0	48,0	48,0	25,0	75,0	4133349
NPT 1 1/4"	10	21,0	33,0	2,00	50,0	55,0	55,0	25,0	77,0	4133369
NPT 1 1/2"	10	21,0	34,0	2,00	55,0	55,0	55,0	26,0	77,0	4133369
NPT 1 1/2"	11	27,0	41,0	2,50	55,0	64,0	64,0	26,0	83,0	4133379
NPT 2"	12	33,0	46,0	2,50	65,0	70,0	70,0	27,0	86,0	4133409
NPT 2"	13	40,0	53,5	2,50	70,0	85,0	85,0	27,0	97,0	4133419
NPT 2 1/2"	13	40,0	54,0	2,50	80,0	85,0	85,0	40,0	108,0	4133459
NPT 2 1/2"	14	47,0	64,5	2,50	85,0	95,0	95,0	40,0	117,0	4133469
NPT 3"	15	54,0	71,0	3,15	100,0	110,0	110,0	42,0	129,0	4133509
NPT 3"	16	63,0	79,0	3,15	110,0	120,0	120,0	42,0	127,0	4133519



**ATEX Ex d/e 4 F**  
**SIB-DEF Kabelverschraubungen**



**Material:**  
Messing vernickelt  
Dichtung: Neopren  
O-Ring: Nitril  
Hinweis: Auch mit Viton Dichtung lieferbar  
Viton Temperatur: -20 bis 200°C  
Edelstahl auf Anfrage

**Kennzeichen:**  
- metrisches Gewinde  
Für geschirmte (armierte) Kabel geeignet  
**Funktion 1:**  
Abdichtung vom Mantel des Kabels (nach dem Schirmkontakt)  
**Funktion 2:**  
Abschirmung des Kabels  
**Funktion 3:**  
Zugentlastung  
**Funktion 4:**  
Abdichtung vom Mantel des Kabels (vor dem Schirmkontakt)

**Anwendungsbereiche:**  
• für explosionsgefährdete Bereiche  
• Maschinen und Apparatebau  
• Mess- und Regeltechnik  
• Anlagenbau

Zündschutzart :  
Nach Normen :

**Ex d/e**  
EN 60079-0, 60079-1,  
60079-7, 61241-0,  
61241-1

Gerätegruppe :  
Kategorie :  
Atmosphäre :  
Zone :  
Temperatur :  
IP Schutzart :

II C  
2 und 3  
G / D  
1, 2, 21, 22  
-40°C / 100°C  
IP 68 / 66

**ATEX Ex d/e 4 F**  
**SIB-DEF Cable Gland**

**Material:**  
Nickel plated brass  
Seal: Neoprene  
O-Ring: Nitril  
Note: also available with viton seal  
viton temperature : -20 to 200°C  
stainless steel on request

**Characteristics:**  
- metric thread  
Suitable for armoured cables  
**Funktion 1:**  
Cable watertightness (after shielding connection)  
**Funktion 2:**  
Shielding connection  
**Funktion 3:**  
Traction relief  
**Funktion 4:**  
Cable watertightness (before shielding connection)

**Applications:**  
• for hazardous locations  
• machine- and apparatus engineering  
• measuring and control engineering  
• plant installations

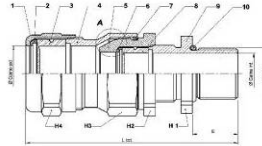
Type of protection :

Conformity with standards :

Device group :  
Category :  
Atmosphäre :  
Zone :  
Temperatur :  
Protection degree :

**Ex d/e**  
EN 60079-0, 60079-1,  
EN 60079-7, 61241-0,  
61241-1

II C  
2 and 3  
G / D  
1, 2, 21, 22  
-40°C / 100°C  
IP 68 / 66



Außengewinde	N°	Klemmbereich		F mm	Klemmbereich		SW H1 mm	SW H2 mm	SW H3 mm	SW H4 mm	E mm	L mm	Art. Nr. vernickelt
		min.	max.		min.	max.							
Thread	N°	clamping range (External Sheath)		F mm	clamping range (Inner Shaath)		SW H1 mm	SW H2 mm	SW H3 mm	SW H4 mm	E mm	L mm	Art. No. nickel-plated
M 12 x 1.5	5	7.0	12.0	1.00	4.0	7.0	18.0	20.0	20.0	20.0	16.0	67.0	4114129
M 16 x 1.5	5	7.0	12.0	1.00	4.0	8.0	20.0	20.0	20.0	20.0	16.0	67.0	4114169
M 16 x 1.5	6	9.0	16.0	1.25	6.0	12.0	18.0	24.0	24.0	24.0	16.0	71.0	4114179
M 20 x 1.5	5	7.0	12.0	1.00	4.0	8.0	24.0	20.0	20.0	20.0	16.0	67.0	4114239
M 20 x 1.5	6	9.0	16.0	1.25	6.0	12.0	24.0	24.0	24.0	24.0	16.0	71.0	4114219
M 20 x 1.5	7	13.0	21.0	1.25	8.5	15.0	28.0	30.0	30.0	30.0	16.0	72.0	4114229
M 25 x 1.5	6	9.0	16.0	1.25	6.0	12.0	28.0	24.0	24.0	24.0	16.0	71.0	4114259
M 25 x 1.5	7	13.0	21.0	1.25	8.5	15.5	30.0	30.0	30.0	30.0	16.0	72.0	4114269
M 25 x 1.5	8	17.0	27.5	1.60	12.0	19.5	36.0	40.0	40.0	40.0	16.0	89.0	4114279
M 32 x 1.5	8	17.0	27.5	1.60	12.0	20.5	40.0	40.0	40.0	40.0	16.0	89.0	4114329
M 32 X 1.5	9	22.0	34.0	2.00	16.0	25.5	44.0	48.0	48.0	48.0	16.0	95.0	4114339
M 40 X 1.5	9	22.0	34.0	2.00	16.0	27.5	48.0	48.0	48.0	48.0	16.0	95.0	4114409
M 40 X 1.5	10	28.0	41.0	2.00	21.0	33.0	50.0	55.0	55.0	55.0	16.0	100.0	4114419
M 50 X 1.5	10	28.0	41.0	2.00	21.0	34.0	55.0	55.0	55.0	55.0	16.0	100.0	4114509
M 50 X 1.5	11	34.0	48.0	2.50	27.0	41.0	64.0	64.0	64.0	64.0	16.0	110.0	4114519
M 63 X 1.5	12	39.0	54.0	2.50	33.0	46.0	70.0	70.0	70.0	70.0	16.0	112.0	4114639
M 63 X 1.5	13	48.0	65.0	2.50	40.0	54.0	80.0	85.0	85.0	90.0	16.0	128.0	4114649
M 75 X 1.5	13	48.0	65.0	2.50	40.0	54.0	85.0	85.0	85.0	90.0	18.0	128.0	4114759
M 75 X 1.5	14	55.0	74.0	2.50	47.0	65.0	90.0	95.0	95.0	100.0	18.0	140.0	4114769
M 80 X 1.5	14	55.0	74.0	2.50	47.0	65.0	95.0	95.0	100.0	100.0	20.0	140.0	4114809
M 80 X 1.5	15	65.0	83.0	3.15	54.0	71.0	100.0	110.0	110.0	125.0	20.0	151.0	4114819
M 90 X 1.5	15	65.0	83.0	3.15	54.0	74.0	110.0	110.0	110.0	125.0	22.0	151.0	4114909
M 90 X 1.5	16	74.0	93.0	3.15	63.0	79.0	110.0	120.0	120.0	125.0	22.0	151.0	4114919
M 100 X 1.5	16	74.0	93.0	3.15	63.0	82.0	120.0	120.0	120.0	125.0	22.0	151.0	4114999



**ATEX Ex d/le 4 F**  
**SIB-DEF Kabelverschraubungen**



**Material:**  
Messing vernickelt  
Dichtung: Neopren  
O-Ring: Nitril  
Hinweis: Auch mit Viton Dichtung lieferbar  
Viton Temperatur: -20 bis 200°C  
Edelstahl auf Anfrage

**Kennzeichen:**  
- NPT Gewinde  
Für geschirmte (armierte) Kabel geeignet

**Funktion 1:**  
Abdichtung vom Mantel des Kabels (nach dem Schirmkontakt)

**Funktion 2:**  
Abschirmung des Kabels

**Funktion 3:**  
Zugentlastung

**Funktion 4:**  
Abdichtung vom Mantel des Kabels (vor dem Schirmkontakt)

**Anwendungsbereiche:**  
• für explosionsgefährdete Bereiche  
• Maschinen und Apparatebau  
• Mess- und Regeltechnik  
• Anlagenbau

**ATEX Ex d/le 4 F**  
**SIB-DEF Cable Gland**

**Material:**  
Nickel plated brass  
Seal: Neoprene  
O-Ring: Nitril  
Note: also available with viton seal  
viton temperature: -20 to 200°C  
stainless steel on request

**Characteristics:**  
- NPT thread  
Suitable for armoured cables

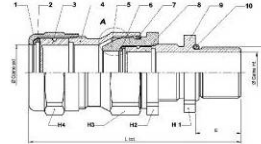
**Function 1:**  
Cable watertightness (after shielding connection)

**Function 2:**  
Shielding connection

**Function 3:**  
Traction relief

**Function 4:**  
Cable watertightness (before shielding connection)

**Applications:**  
• for hazardous locations  
• machine- and apparatus engineering  
• measuring and control engineering  
• plant installations



Zündschutzart :  
Nach Normen :

**Ex d/le**  
EN 60079-0, 60079-1,  
60079-7, 61241-0,  
61241-1

Type of protection :  
Conformity with standards :

**Ex d/le**  
EN 60079-0, 60079-1,  
EN 60079-7, 61241-0,  
61241-1

Gerätegruppe :  
Kategorie :  
Atmosphäre :  
Zone :  
Temperature :  
IP Schutzart :

II C  
2 und 3  
G / D  
1, 2, 21, 22  
-40°C / 100°C  
IP 68 / 66

Device group :  
Category :  
Atmosphäre :  
Zone :  
Temperature :  
IP protection :

II C  
2 and 3  
G / D  
1, 2, 21, 22  
-40°C / 100°C  
IP 68 / 66

Augengewinde	N°	Klemmbereich		F mm	Klemmbereich		SW H1 mm	SW H2 mm	SW H3 mm	SW H4 mm	E mm	L mm	Art. Nr. vernickelt
		min.	max.		min.	max.							
Thread	N°	clamping range (External sheath)		F mm	clamping range (Inner sheath)		SW H1 mm	SW H2 mm	SW H3 mm	SW H4 mm	E mm	L mm	Art. No. nickel-plated
		min.	max.		min.	max.							
NPT 3/8"	5	7.0	12.0	1.00	4.0	8.0	20.0	20.0	20.0	20.0	16.0	67.0	4134059
NPT 3/8"	6	9.0	16.0	1.25	6.0	12.0	22.0	24.0	24.0	24.0	16.0	71.0	4134069
NPT 1/2"	5	7.0	12.0	1.00	4.0	8.0	24.0	20.0	20.0	20.0	20.0	71.0	4134109
NPT 1/2"	6	9.0	16.0	1.25	6.0	12.0	24.0	24.0	24.0	24.0	20.0	75.0	4134119
NPT 1/2"	7	13.0	21.0	1.25	8.5	15.0	24.0	30.0	30.0	30.0	20.0	76.0	4134129
NPT 3/4"	6	9.0	16.0	1.25	6.0	12.0	28.0	24.0	24.0	24.0	20.0	75.0	4134209
NPT 3/4"	7	13.0	21.0	1.25	8.5	15.5	30.0	30.0	30.0	30.0	20.0	76.0	4134219
NPT 3/4"	8	17.0	27.5	1.60	12.0	19.5	30.0	40.0	40.0	40.0	20.0	93.0	4134229
NPT 1"	8	17.0	27.5	1.60	12.0	20.5	36.0	40.0	40.0	40.0	25.0	98.0	4134309
NPT 1"	9	22.0	34.0	2.00	16.0	25.5	40.0	48.0	48.0	48.0	25.0	104.0	4134319
NPT 1" 1/4	9	22.0	34.0	2.00	16.0	27.5	44.0	48.0	48.0	48.0	25.0	104.0	4134349
NPT 1" 1/4	10	28.0	41.0	2.00	21.0	33.0	50.0	55.0	55.0	55.0	25.0	109.0	4134359
NPT 1" 1/2	10	28.0	41.0	2.00	21.0	34.0	55.0	55.0	55.0	55.0	26.0	110.0	4134369
NPT 1" 1/2	11	34.0	48.0	2.50	27.0	41.0	55.0	64.0	64.0	64.0	26.0	120.0	4134379
NPT 2"	12	39.0	54.0	2.50	33.0	46.0	65.0	70.0	70.0	70.0	27.0	123.0	4134409
NPT 2"	13	48.0	65.0	2.50	40.0	53.5	70.0	85.0	85.0	90.0	27.0	139.0	4134419
NPT 2" 1/2	13	48.0	65.0	2.50	40.0	54.0	80.0	85.0	85.0	90.0	40.0	150.0	4134459
NPT 2" 1/2	14	55.0	74.0	2.50	47.0	64.5	85.0	95.0	95.0	100.0	40.0	162.0	4134469
NPT 3"	15	65.0	83.0	3.15	54.0	71.0	100.0	110.0	110.0	125.0	42.0	173.0	4134509
NPT 3"	16	74.0	93.0	3.15	63.0	79.0	110.0	120.0	120.0	125.0	42.0	171.0	4134519



### ATEX Ex d/e -Blindstopfen rund Messing vernickelt

MS

IP  
66/68

+ 100°C  
- 40°C

ATEX



**Material:**  
Messing vernickelt  
Blindstopfen  
O-Ring: Nitril

**Kennzeichen:**  
• Metrisches Gewinde  
• rund

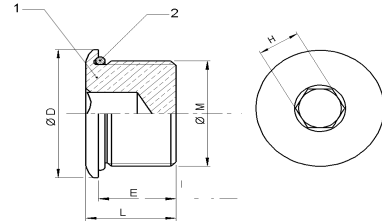
**Anwendungsbereiche:**  
• für explosionsgefährdete Bereiche

### ATEX d/e -Plugs round nickel-plated brass

**Material:**  
nickel-plated brass  
Plugs  
O-ring: nitril

**Characteristics:**  
• metric thread  
• round

**Applications:**  
• for hazardous locations



Zündschutzart : **Ex d/e**  
Nach Normen : EN 60079-0, 60079-1,  
60079-7, 61241-0, 61241-1  
Gerätegruppe : II / C  
Kategorie : 2 und 3  
Atmosphäre : G / D  
Zone : 1, 2 , 21, 22  
Temperaturen : -40°C / 100°C  
IP Schutzart : IP68/66

Type of protection : **Ex d/e**  
Conformity with standards : EN 60079-0, 60079-1,  
60079-7, 61241-0, 61241-1  
Device group : II / C  
Category : 2 und 3  
Atmosphäre : G / D  
Zone : 1, 2 , 21, 22  
Temperature : -40°C / 100°C  
Protection degree : IP68/66

Aussen- Gewinde	SW H mm	Gewinde- länge (E) mm	Gesamt- länge (L) mm	Durchmesser mm	Art.-Nr. vernickelt	VE Stck.
Thread	SW H mm	Thread length (E) mm	Complete Length (L) mm	diameter mm	Art.-No. nickel-plated	PU pcs.
M12 x 1.5	6,0	15,0	17,5	16	D8912110	1
M16 x 1.5	10,0	15,0	17,5	20	D8916110	1
M20 x 1.5	10,0	15,0	17,5	24	D8920110	1
M25 x 1.5	10,0	15,0	17,5	30	D8925110	1
M32 x 1.5	15,0	15,0	17,5	36	D8932110	1
M40 x 1.5	15,0	15,0	17,5	45	D8940110	1
M50 x 1.5	20,0	15,0	18,0	55	D8950110	1
M63 x1.5	20,0	15,0	18,0	70	D8963110	1
M75 x 1.5	20,0	15,0	18,0	80	D8975110	1



### ATEX Ex d/e -Blindstopfen rund

Messing vernickelt

MS

IP  
66/68

+ 100°C  
- 40°C

ATEX



**Material:**

Messing vernickelt  
Blindstopfen

**Kennzeichen:**

- NPT Gewinde
- rund

**Anwendungsbereiche:**

- für explosionsgefährdete Bereiche

### ATEX Ex d/e-Plugs round

nickel-plated brass



**Material:**

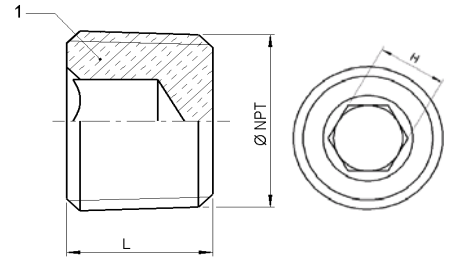
nickel-plated brass  
blind plugs

**Characteristics:**

- NPT thread
- round

**Applications:**

- for hazardous locations



Zündschutzart :

**Ex d/e**

Type of protection :

**Ex d/e**

Nach Normen :

EN 60079-0, **60079-1**,  
60079-7, 61241-0, 61241-1

Conformity with standards :

EN 60079-0, **60079-1**,  
60079-7, 61241-0, 61241-1

Gerätegruppe :

**II C**

Type of protection :

**II C**

Kategorie :

2 und 3

Category :

2 und 3

Atmosphäre :

G / D

Atmosphere :

G / D

Zone :

1, 2 , 21, 22

Zone :

1, 2 , 21, 22

Temperaturen :

-40°C / 100°C

Temperature :

-40°C / 100°C

IP Schutzart :

**IP66/68**

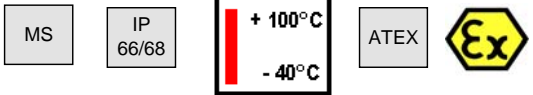
Protection degree :

**IP66/68**

Aussen-Gewinde	SW H mm	Gesamt-länge (L) mm	Art.-Nr. vernickelt	VE Stck.
Thread	SW H mm	Complete Length (L) mm	Art.-No. nickel-plated	PU pcs.
NPT 1/4"	6,0	16,0	D8906100	1
NPT 3/8"	8,0	16,0	D8908100	1
NPT 1/2"	10,0	16,0	D8914100	1
NPT 3/4"	10,0	16,0	D8919100	1
NPT 1"	15,0	18,0	D8928100	1
NPT 1" 1/4	15,0	18,0	D8935100	1
NPT 1" 1/2	15,0	20,0	D8941100	1
NPT 2"	20,0	20,0	D8947100	1
NPT 2" 1/2	20,0	22,0	D8951100	1
NPT 3"	20,0	22,0	D8961100	1



**ATEX Ex d/e Erweiterungen**  
Messing vernickelt



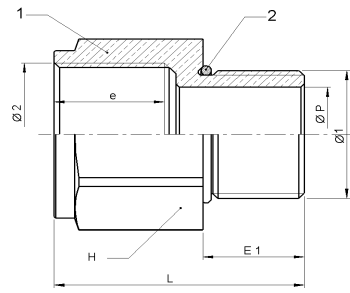
**Material:**  
Erweiterung: Messing vernickelt  
O-Ring : Nitril  
**Kennzeichen:**  
• metrisches -/ NPT Außengewinde  
• metrisches -/ NPT Innengewinde  
• 6-kant

**Anwendungsbereiche:**  
• für explosionsgefährdete Bereiche

**ATEX Ex d/e Enlarger**  
nickel-plated brass

**Material:**  
enlarger: nickel-plated brass  
O-ring: Nitril  
**Characteristics:**  
• metric -/ NPT external thread  
• metric -/ NPT internal thread  
• hexagon

**Applications:**  
• for hazardous locations



Zündschutzart : **Ex d/e**  
Nach Normen : EN 60079-0, **60079-1**, 60079-7, 61241-0, 61241-1

Gerätegruppe : **II C**  
Kategorie : 2 und 3  
Atmosphäre : G / D  
Zone : 1, 2 , 21, 22  
Temperaturen : -40°C / 100°C  
**IP Schutzart : IP66/68**

Type of protection : **Ex d/e**  
Conformity with standards : EN 60079-0, **60079-1**, 60079-7, 61241-0, 61241-1

Device group : **II C**  
Category : 2 und 3  
Atmosphere : G / D  
Zone : 1, 2 , 21, 22  
Temperature : -40°C / 100°C  
**Protection degree : IP66/68**

**M → M**

Aussen-Gewinde	Innen-gewinde	SW H mm	Gewinde-länge (E) mm	Gesamt-länge (L) mm	P mm	Art.-Nr. vernickelt	VE Stck.
Male thread	Female thread	SW H mm	Thread length (E) mm	Complete Length (L) mm	P mm	Art.-No. nickel-plated	PU pcs.
M 12 x 1.5	M 16 x 1.5	19,0	15,0	37,0	7,0	D8812165	1
M 16 x 1.5	M 20 x 1.5	23,0	15,0	37,0	11,0	D8816205	1
M 20 x 1.5	M 25 x 1.5	28,0	15,0	37,0	15,0	D8820255	1
M 25 x 1.5	M 32 x 1.5	36,0	15,0	38,0	20,0	D8825325	1
M 32 x 1.5	M 40 x 1.5	44,0	15,0	38,0	26,0	D8832405	1
M 40 x 1.5	M 50 x 1.5	55,0	15,0	39,0	34,0	D8840505	1
M 50 x 1.5	M 63 x 1.5	70,0	16,0	41,0	42,0	D8850635	1
M 63 x 1.5	M 75 x 1.5	80,0	17,0	45,0	55,0	D8863755	1
M 75 x 1.5	M 90 x 1.5	95,0	18,0	52,0	67,0	D8875905	1
M 90 x 1.5	M 100 x 1.5	110,0	22,0	56,0	80,0	D8890995	1

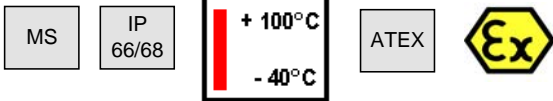
**NPT → NPT**

Aussen-Gewinde	Innen-gewinde	SW H mm	Gewinde-länge (E) mm	Gesamt-länge (L) mm	P mm	Art.-Nr. vernickelt	VE Stck.
Male thread	Female thread	SW H mm	Thread length (E) mm	Complete Length (L) mm	P mm	Art.-No. nickel-plated	PU pcs.
NPT 1/2"	NPT 3/4"	30,0	20,0	47,0	15,0	D8814191	1
NPT 3/4"	NPT 1"	38,0	20,0	54,0	20,0	D8819281	1
NPT 1"	NPT 1" 1/4	50,0	25,0	59,0	26,0	D8828351	1
NPT 1" 1/4	NPT 1" 1/2	52,0	25,0	59,0	34,0	D8835411	1
NPT 1" 1/2	NPT 2"	64,0	26,0	63,0	40,0	D8841470	1
NPT 2"	NPT 2" 1/2	80,0	27,0	78,0	50,0	D8847511	1
NPT 2" 1/2	NPT 3"	100,0	40,0	96,0	60,0	D8851611	1





### ATEX Ex d/e Reduktionen Messing vernickelt



**Material:**  
Reduktion: Messing vernickelt  
O-Ring: Nitril

- Kennzeichen:**
- metrisches -/ NPT Außengewinde
  - metrisches -/ NPT Innengewinde
  - 6-kant

**Anwendungsbereiche:**

- für explosionsgefährdete Bereiche

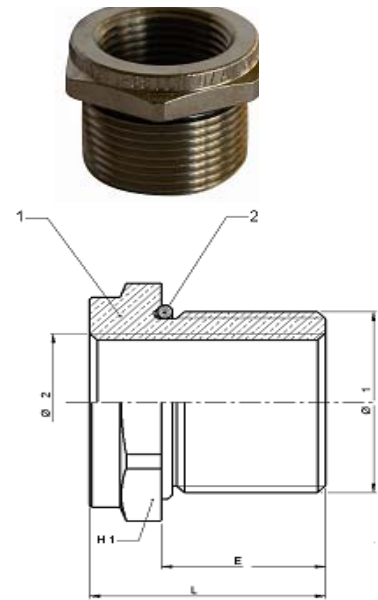
### ATEX Ex d/e Reducer nickel-plated brass

**Material:**  
Reduction: nickel-plated brass  
O-ring: nitril

- Characteristics:**
- metric -/ NPT external thread
  - metric -/ NPT internal thread
  - hexagon

**Applications:**

- for hazardous locations



Zündschutzart : **Ex d/e**  
EN 60079-0, EN 60079-1, 60079-7, 61241-0, 61241-1  
Nach Normen : **II C**  
Gerätegruppe : **2 und 3**  
Kategorie : **G / D**  
Atmosphäre : **1, 2, 21, 22**  
Zone : **-40°C / 100°C**  
Temperaturen : **IP66/68**

Type of protection : **Ex d/e**  
EN 60079-0, EN 60079-1, 60079-7, 61241-0, 61241-1  
Conformity with standards : **II C**  
Device group : **2 und 3**  
Category : **G / D**  
Atmosphäre : **1, 2, 21, 22**  
Zone : **-40°C / 100°C**  
Temperature : **IP66/68**

### M → M

Aussen-Gewinde Male thread	Innen-gewinde Female thread	SW H1 mm SW H1 mm	Gewinde-länge (E) Thread length (E) mm	Gesamt-länge (L) Complete Length (L) mm	Art.-Nr. vernickelt Art.-No. nickel-plated	VE Stck. PU pcs.
M 16 x 1.5	M 12 x 1.5	18	16	22	D8716125	1
M 20 x 1.5	M 12 x 1.5	24	16	23	D8720125	1
M 20 x 1.5	M 16 x 1.5	24	16	23	D8720165	1
M 25 x 1.5	M 16 x 1.5	28	16	23	D8725165	1
M 25 x 1.5	M 20 x 1.5	28	16	23	D8725205	1
M 32 x 1.5	M 20 x 1.5	36	16	24	D8732205	1
M 32 x 1.5	M 25 x 1.5	36	16	24	D8732255	1
M 40 x 1.5	M 25 x 1.5	44	16	24	D8740255	1
M 40 x 1.5	M 32 x 1.5	44	16	24	D8740325	1
M 50 x 1.5	M 32 x 1.5	55	16	26	D8750325	1
M 50 x 1.5	M 40 x 1.5	55	16	26	D8750425	1
M 63 x 1.5	M 40 x 1.5	70	16	28	D8763405	1
M 63 x 1.5	M 50 x 1.5	70	16	28	D8763505	1
M 75 x 1.5	M 50 x 1.5	80	16	28	D8775505	1
M 75 x 1.5	M 63 x 1.5	80	16	28	D8775635	1
M 90 x 1.5	M 63 x 1.5	95	20	35	D8790635	1
M 90 x 1.5	M 75 x 1.5	95	20	35	D8790755	1
M 100 x 1.5	M 75 x 1.5	110	22	38	D8799755	1
M 100 x 1.5	M 90 x 1.5	110	22	38	D8799905	1

### NPT → NPT

Aussen-Gewinde Male thread	Innen-gewinde Female thread	SW H mm SW H mm	Gewinde-länge (E) Thread length (E) mm	Gesamt-länge (L) Complete Length (L) mm	Art.-Nr. vernickelt Art.-No. nickel-plated	VE Stck. PU pcs.
NPT 3/4"	NPT 1/2"	28,0	20,0	26,0	D8719141	1
NPT 1"	NPT 1/2"	36,0	25,0	33,0	D8728141	1
NPT 1"	NPT 3/4"	36,0	25,0	33,0	D8728191	1
NPT 1"1/4	NPT 3/4"	44,0	25,0	35,0	D8735191	1
NPT 1"1/4	NPT 1"	44,0	25,0	35,0	D8735281	1
NPT 1"1/2"	NPT 1"	50,0	26,0	36,0	D8741281	1
NPT 1"1/2"	NPT 1"1/4	50,0	26,0	36,0	D8741351	1
NPT 2"	NPT 1"1/4	64,0	27,0	39,0	D8747351	1
NPT 2"	NPT 1"1/2	64,0	27,0	39,0	D8747411	1
NPT 2"	NPT 1"	64,0	27,0	39,0	D8747281	1
NPT 3"	NPT 2"	95,0	42,0	57,0	D8761471	1
NPT 3"	NPT 2"1/2	95,0	42,0	57,0	D8761511	1



### ATEX Ex d/e Übergangsstücke Messing vernickelt

MS

IP  
66/68

+ 100°C  
- 40°C

ATEX



**Material:**

Messing vernickelt

O-Ring: Nitril

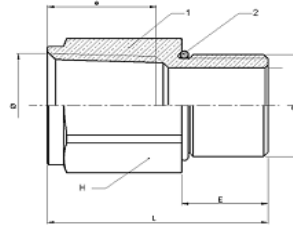
**Kennzeichen:**

- metrisches -/ NPT Außengewinde
- NPT-/ metrisches Innengewinde
- 6-kant

**Anwendungsbereiche:**

- für explosionsgefährdete Bereiche

### ATEX Ex d/e Adaptors nickel-plated brass



**Material:**

nickel-plated brass

O-ring: nitril

**Characteristics:**

- metric -/ NPT external thread
- NPT -/ metric internal thread
- hexagon

**Applications:**

- for hazardous locations

Zündschutzart : **Ex d/e**  
 Nach Normen : EN 60079-0, **60079-1**,  
 60079-7, 61241-0,  
 61241-1  
 Gerätegruppe : II / C  
 Kategorie : 2 und 3  
 Atmosphäre : G / D  
 Zone : 1, 2 , 21, 22  
 Temperaturen : -40°C / 100°C  
 IP Schutzart : IP68/66

Type of protection : **Ex d/e**  
 Conformity with standards : EN 60079-0, **60079-1**,  
 60079-7, 61241-0,  
 61241-1  
 Device group : II / C  
 Category : 2 und 3  
 Atmosphere : G / D  
 Zone : 1, 2 , 21, 22  
 Temperature : -40°C / 100°C  
 Protection degree : IP68/66

### M → NPT

Aussen-Gewinde	Innen-gewinde	SW H mm SW H mm	Gewinde-länge (E) mm Thread length (E) mm	Gesamt-länge (L) mm Complete Length (L) mm	Art.-Nr. vernickelt Art.-No. nickel-plated	VE Stck. PU pcs.
M 16 x 1.5	NPT 1/2"	24,0	15,0	42,0	D8616145	1
M 20 x 1.5	NPT 1/2"	24,0	15,0	40,0	D8620145	1
M 20 x 1.5	NPT 3/4"	30,0	15,0	42,0	D8620195	1
M 25 x 1.5	NPT 1/2"	28,0	15,0	23,0	D8625145	1
M 25 x 1.5	NPT 3/4"	30,0	15,0	41,0	D8625195	1
M 25 x 1.5	NPT 1"	38,0	15,0	47,0	D8625285	1
M 32 x 1.5	NPT 1/2"	36,0	15,0	23,0	D8632145	1
M 32 x 1.5	NPT 3/4"	36,0	15,0	23,0	D8632195	1
M 32 x 1.5	NPT 1"	38,0	15,0	47,0	D8632285	1
M 40 x 1.5	NPT 3/4"	44,0	15,0	23,0	D8640195	1
M 40 x 1.5	NPT 1"	44,0	15,0	23,0	D8640285	1
M 40 x 1.5	NPT 1 1/4"	46,0	15,0	47,0	D8640355	1
M 40 x 1.5	NPT 1 1/2"	52,0	15,0	48,0	D8640415	1
M 50 x 1.5	NPT 1"	55,0	16,0	26,0	D8650285	1
M 50 x 1.5	NPT 1 1/2"	55,0	16,0	50,0	D8650415	1
M 50 x 1.5	NPT 2"	64,0	16,0	50,0	D8650475	1
M 63 x 1.5	NPT 1 1/2"	70,0	17,0	28,0	D8663415	1
M 63 x 1.5	NPT 2"	70,0	17,0	51,0	D8663475	1
M 75 x 1.5	NPT 2"	80,0	18,0	29,0	D8675475	1
M 75 x 1.5	NPT 2 1/2"	80,0	18,0	63,0	D8675515	1
M 75 x 1.5	NPT 3"	95,0	18,0	70,0	D8675615	1

### NPT → M

Aussen-Gewinde	Innen-gewinde	SW H mm SW H mm	Gewinde-länge (E) mm Thread length (E) mm	Gesamt-länge (L) mm Complete Length (L) mm	Art.-Nr. vernickelt Art.-No. nickel-plated	VE Stck. PU pcs.
NPT 1/2"	M 12 x 1.5	24,0	20,0	27,0	D8614121	1
NPT 1/2"	M 16 x 1.5	24,0	20,0	27,0	D8614161	1
NPT 1/2"	M 20 x 1.5	24,0	20,0	42,0	D8614201	1
NPT 1/2"	M 25 x 1.5	28,0	20,0	42,0	D8614251	1
NPT 3/4"	M 16 x 1.5	28,0	20,0	27,0	D8619161	1
NPT 3/4"	M 20 x 1.5	28,0	20,0	27,0	D8619201	1
NPT 3/4"	M 25 x 1.5	28,0	20,0	42,0	D8619251	1
NPT 1"	M 20 x 1.5	36,0	25,0	33,0	D8628201	1
NPT 1"	M 25 x 1.5	36,0	25,0	33,0	D8628251	1
NPT 1"	M 32 x 1.5	36,0	25,0	48,0	D8628321	1
NPT 1 1/4"	M 25 x 1.5	44,0	25,0	33,0	D8635251	1
NPT 1 1/4"	M 32 x 1.5	44,0	25,0	33,0	D8635321	1
NPT 1 1/2"	M 32 x 1.5	50,0	26,0	35,0	D8641321	1
NPT 1 1/2"	M 40 x 1.5	50,0	26,0	35,0	D8641401	1
NPT 1 1/2"	M 50 x 1.5	55,0	26,0	51,0	D8641501	1
NPT 2"	M 50 x 1.5	64,0	27,0	36,0	D8647501	1
NPT 2"	M 63 x 1.5	70,0	27,0	55,0	D8674631	1
NPT 2"	M 75 x 1.5	80,0	27,0	55,0	D8647751	1
NPT 2 1/2"	M 50 x 1.5	80,0	40,0	53,0	D8651501	1
NPT 2 1/2"	M 63 x 1.5	80,0	40,0	53,0	D8651631	1
NPT 3"	M 63 x 1.5	90,0	42,0	55,0	D8661631	1
NPT 3"	M 75 x 1.5	90,0	42,0	55,0	D8661751	1



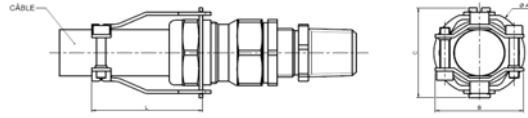
## ATEX Ex d/e -Klemmmodul

## ATEX d/e -Clamping Module



**Material:**  
verzinkter Stahl

**Material:**  
Galvanized steel



Zündschutzart : **Ex d/e**  
 Gerätegruppe : **II C - II**  
 Kategorie : **2 und 3**  
 Atmosphäre : **G / D**  
 Zone : **1, 2, 21, 22**

Type of protection : **Ex d/e**  
 Device group : **II C - II**  
 Category : **2 and 3**  
 Atmosphere : **G / D**  
 Zone : **1, 2, 21, 22**

Typ	Art.-Nr.	L	Ø A	B	C
Type	Art.-No.	mm	mm	mm	mm
5	D8505500	42	25	25	28
6	D8506500	42	29	28	32
7	D8507500	50	38	37	40
8	D8508500	54	48	40	50
9	D8509500	72	58	48	62
10	D8510500	72	65	56	70
11	D8511500	72	74	66	78
12	D8512500	72	80	74	84



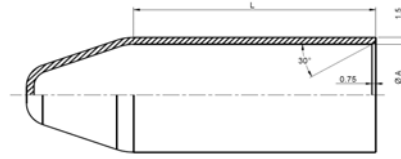
**ATEX Ex d/e -Schutztüllen  
PVC**



**Material:**  
Schwarzes PVC

**ATEX d/e -Shroud  
PVC**

**Material:**  
Black supple PVC



Type	Art.-Nr.	Ø A mm	L mm
Type	Art.-No.	Ø A mm	L mm
5	N0805000	22,2	50
6	N0806000	26,7	55
7	N0807000	33,5	55
8	N0808000	43,5	70
9	N0809000	51,6	75
10	N0810000	60,1	85
11	N0811000	69	95
12	N0812000	77,6	95
13	N0813000	100	110
14	N0814000	110	120
15	N0815000	125	130
16	N0816000	135	130

